

# WWETB COMMUNITY EDUCATION NEWSLETTER

Summer 2022

WWETB Community Education supports Waterford and Wexford community-based groups through grant funding and tutor hours. Community Education aims to promote and support community work as a means of addressing poverty, social exclusion and inequality and ultimately as a means of achieving social change that will contribute to the creation of a more just, sustainable and equal society.

## The Community Education Team on the road in Co Waterford

The importance of local community halls in rural communities cannot be overlooked. An active hall brings a sense of belonging to communities and is vital tool in addressing rural isolation while promoting cohesion. On Friday, 3rd June, Fran Kennedy AEO, Bridin Moloney CEF Wexford, Deborah Butler CEF Waterford City and Aine Whelan CEF Co Waterford visited two recently renovated community halls based in Co Waterford.

### Carbally Community Development Centre

Carbally Community Development Centre is located on the cliffs in Ballymacaw near Dunmore East, Co Waterford. Committee member, Eleanor Halley, kindly welcomed the Community Education team and showed us the fantastic facilities at the Centre. The Committee, with the support of the community, have done a fantastic job to restore an old building and give it a new lease of life for the community. The Centre offers many education programmes, as well as activities and amenities for members of the community. WWETB funded Restore and Reuse, Healing and Wellbeing, The Power of Fitness and Outdoor Expressive Art programmes. Most recently, the Mitigating Against Education Disadvantage Fund supported the Centre to purchase equipment and provide IT and photography classes for the community. The Community has recently started The Tuesday Club to provide an opportunity for older people in the community to come together.

### Clonea Power Parish Hall (Old School)

The next stop was to Clonea Power Parish Hall (Old School) at the foot of the Comeragh Mountains. The historic building has recently been renovated into a beautiful Community Centre right in the heart of the village. The Community Education Team was welcomed by committee members. The hall has undoubtedly enhanced the community greatly, offering various educational programmes and providing space for other community activities. WWETB's Community Education programme recently funded cookery classes and flower arranging. The centre also offers a Knit and Natter and Pilates, among other activities.

Both communities mentioned above have worked extremely hard to ensure that their community centres remain open, and this is an impressive achievement.



Carbally Community with their finished pieces from the Restore and Reuse Programme



WWETB staff presenting plaque to Clonea Power committee members



### FOCUS Rising – A gardening project with a difference!



Early in August, FOCUS Ireland and the PETE project showcased the results of a garden project located in the grounds of the Focus Ireland Apartment complex in Dungarvan, Co. Waterford.

The name of the garden project is 'Focus Rising' and is a collaboration between Focus Ireland Dungarvan and PETE project Waterford, and is funded by WWETB/Mitigating Against Education Disadvantage fund.

A well-known Dublin Street artist, Jess Tobin, was commissioned to produce a mural for the garden project demonstrating the themes of inclusion, diversity, biodiversity and a community emerging post Covid, rising up together to improve their local environment. Elements of the Irish Traveller culture have been included in the wall art (wheels representing cart wheels), in planters (tin buckets representing the tradition of tin making and repair in the traveller culture) and also in the yellow from the flag of the Irish Traveller Movement, and by a yellow deck chair in the mural. Building on the theme of the project, colours of the rainbow flag representing the LGBT+ community are included in the mural and echoed in the brightly painted garden furniture and colourful planting scheme in the area.

Garden furniture was made to order by Renew Enterprises, Treo Port Láirge, a local social enterprise, and has been installed outside the apartments. This has also been painted in bright colours to encourage the residents to enjoy the outside space and have a meeting place for residents post Covid. Wall art pieces and balcony planter boxes were created to support wildlife and to improve the appearance of the apartments and foster community spirit.

This project has been customer driven and the local residents and their children have taken ownership of the project. During the process, participants were given support to complete general learning assignments based upon the practical work involved in the project and they also had an opportunity to reflect on their own learning in the areas of: communications, personal effectiveness, community involvement and an evaluation of the project.

### Co Waterford Women's Groups Celebrate International Women's Day and Aontas Adult Learner Festival

WWETB and Waterford Area Partnership joined forces to host a networking event at the Park Hotel Dungarvan to celebrate International Women's Day and the Aontas Adult Learner Festival. 170 women participated in the event and, not surprisingly, there was great energy in the room as our last event was two years ago just before Ireland locked down! The Syrian and Afghan women shared some of their traditional and delicious food, and many groups displayed their fabulous work. Karen Power was the MC for the event, and ensured that the 12 women's groups present had the opportunity to introduce their group and share their story. The celebration continued with a traditional dance from the Syrian Women and Line Dancing from Déise Women's Shed. In keeping with the theme for the day #BreakTheBias, we were privileged to hear an Afghan refugee share her story, emphasising the importance of women working together towards equality worldwide. Fran Kennedy, AEO, closed the event by highlighting the power of women's groups and the positive impact they have on their own lives and on family and community life. A big thank you to Fatima, a sixth-year student from Dungarvan College, who translated for the Syrian women, ensuring a memorable day for all present.

#BreakTheBias  
#LearnYourWay





## Holy Well Project

### A Bunclody Community Education Project



On Sunday 14th August 2022, WWETB Community Education tutors, Celine Cash and Sally Murphy, and the Bunclody Traveller Women's Group, brought together over 150 people from the local community for a blessing of the Ballinacoola Holy Well. The event marked the culmination of a year-long community education project of researching and restoring Ballinacoola Holy Well. Undertaken by the Bunclody Traveller Women's Group, and facilitated by Tutors Sally and Celine, the project is recorded in a new booklet, "Our Journey: Restoring the Holy Well at Ballinacoola". Sally and Celine explain; "The idea of restoring the Holy Well came about from the WWETB Women's Group in Bunclody. It is very evident that these women have flourished and have been empowered to create change".

The project received funding from SETU Access Office and was supported throughout by the WWETB Community Education Programme and FDYS Bunclody. As part of the project, WWETB Bunclody Traveller Women's group, along with WWETB staff, visited South East Technological University (SETU) Waterford.

Interviewed on KCLR 96FM, the project facilitators, Sally and Celine, who are also both studying for a Higher Certificate in Arts in Community Education and Development with SETU's School of Adult & Continuing Education, noted that "it started off as a Traveller Women's Group project, but then it ended up as a full community group. Everyone got involved, the volunteers all came together as a community, it was very special".

Celine added that "it was really 'community at heart' and that's what it is all about. Our aim is community education, and community education is all about respect, choice, participation and lived experience".

A huge well done to everyone involved in this powerful community education project.





## Butler Community Centre – Wall Mural Project

Butler Community Centre is a community centre with associated amenities and services for people of the Sacred Heart Parish, St Johns Park, Kilcohon and its environs in Waterford.

A portion of the land outside the Community Centre was given over to create a communal garden and native orchard, and to invite the local community to grow fruit, vegetables, flowers and trees.

In early 2022, after receiving a WWETB Community Education grant, participants from the Butler Community group, Cara Autism services and Vita Hub/REHABCARE came together to sketch out some ideas, clean walls, etch out their drawings on a variety of surfaces, and then fill the pictures in with paint on the walls around the garden.

The pictures speak for themselves...and there is no stopping the group as even at the end of the official course, they have kept going by further completing miniature murals in the garden, and also purchasing some bird houses from the Refugee Men's Shed which add further colour to the garden as a whole.





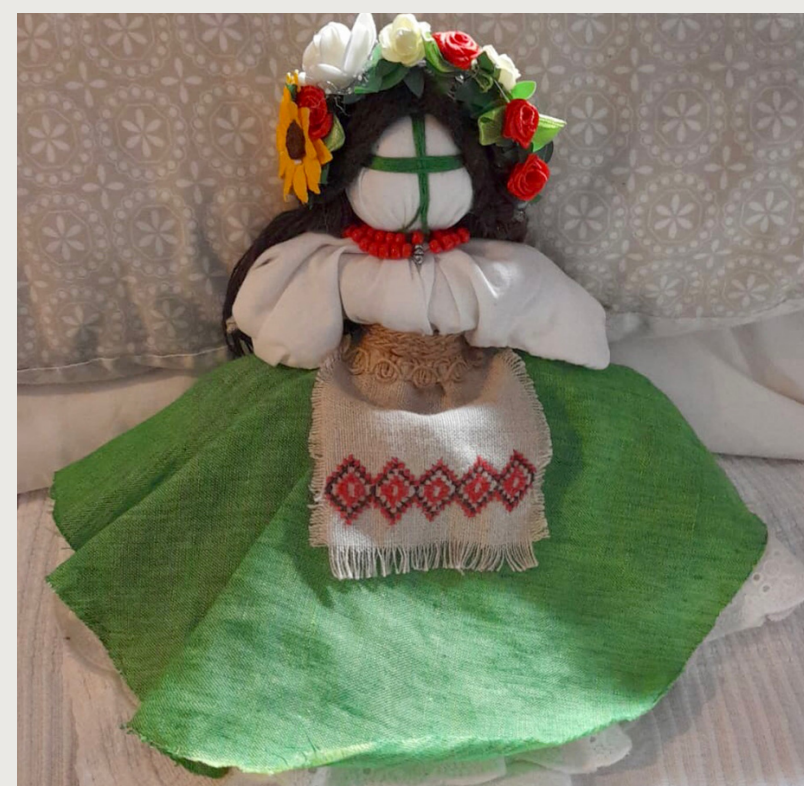
## **Raheen (ARC) Family Resource Centre – Motanka Doll – Community Education Project**

On Ukrainian Independence Day, August 24th, Raheen Family Resource Centre together with WWETB Community Education Programme were honoured to hold the opening of 'Motanka Doll Exhibition'. The exhibition will run from 22nd August to 2nd September in Wexford County Hall.

The Motanka is a traditional Ukrainian guardian doll. Motankas are ancient Ukrainian family talismans. They are symbols of prosperity, goodness and hope. Motanka Doll-making sessions were organised by staff and volunteers from Raheen FRC around many locations in Co. Wexford (rural and urban), many with women from Ukraine who are refugees. These community-based workshops were facilitated by Ukrainian national, Natalia Levinska, who together with other women from Ukraine, generously shared their skills and know-how about how to create the beautiful and intricate Motanka Dolls. There were over 250 participants (from all nationalities, mainly Ukrainian and Irish).

The creativity, community connections and memories made are beyond words. Raheen Family Resource Centre's Motanka Doll Project epitomises core values of community education and is an example of the flexibility of WWETB Community Education Programme being able to respond to emerging community needs and ideas.

**The project was funded by the Mitigating Against Educational Disadvantage (MAED) Fund, with ongoing support from WWETB Community Education Programme.**



For further information please contact the  
Community Education facilitator in your area:

Waterford City, Deborah Butler,  
Mobile: 087 9026116

Email: [deborahbutler@wwetb.ie](mailto:deborahbutler@wwetb.ie)

County Waterford, Áine Whelan,  
Mobile: 087 6738667

Email: [ainewhelan@wwetb.ie](mailto:ainewhelan@wwetb.ie)

County Wexford, Bridín Moloney,  
Mobile: 087 0509689

Email: [bridinmoloney@wwetb.ie](mailto:bridinmoloney@wwetb.ie)