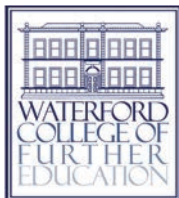


# WCFE

FULL-TIME COURSES  
& APPRENTICESHIPS

## 24/25



**wweth**  
Worldeidreachtas agus Oibríochtaí  
Phoirt Láirge agus Teach Clárúcháin  
Waterford and Wexford  
Education and Training Board

**SOLAS**  
learning works



**THE SECRET  
TO GETTING  
AHEAD IS  
GETTING  
STARTED**

Apply online at:  
[www.wcfe.ie](http://www.wcfe.ie)

Dear Future Learner of Waterford College of Further Education (WCFE),

As Principal of this great college, it is my pleasure to introduce you to and thank you for taking the time to read this prospectus. Discover the many great courses, programmes and apprenticeships on offer in WCFE, which I hope will help you make an informed decision about your future.

WCFE has a team of dedicated teachers and support staff who combine not only educational qualifications, but relevant industry qualifications also. We are committed to providing high-quality learning opportunities for all.

WCFE is committed to ensuring all learners are given the opportunity to excel in their chosen course. In WCFE we value every learner and our tutor system in the college, combined with our students support services and guidance service, provide learners with an outstanding scaffold of pastoral care and support.

WCFE has always been recognised for its strong links with employers and local industry. These links ensure that learners have access to work placements and are equipped with the skills required for future employment.

WCFE has a proud record of learners progressing to higher level education each year. Our partnerships with local, national and international universities and institutes of technology mean that learners have many pathways to progress in their chosen field of learning.

The courses on offer in WCFE are certified by Quality and Qualifications Ireland (QQI) and all successful students will achieve full national certification.

The motto in WCFE is "The Secret to Getting Ahead is Getting Started". WCFE offers opportunities for everyone and I invite you to look at the many courses and choose the one that is best suited to you.

Come join us, you won't regret it!

  
Noreen Reilly  
Principal





1	General Information & Students with Disabilities	25	Animal Care & Canine Grooming
2	Application Procedures	26	Animal Science & Canine Grooming
3	Art & Design Portfolio	27	Advanced Animal Science
4	Photography and Moving Image	28	Pharmacy Assistant
5	Advanced Photography	29	Laboratory Techniques <i>NEW COURSE</i>
6	Journalism, Photography, Creative Writing & Video	30	General Studies with Applied Psychology
7	Sound Engineering and Music Technology	31	Applied Ecology <i>NEW COURSE</i>
8	Advanced Certificate in Audiovisual Media & Film	32	Healthcare Support/Health Service Skills
9	Beauty Therapy - Year 1	33	Nursing Studies
10	Advanced Beauty Therapy with LPL, Make-Up & Spa Treatments - Year 2	34	Childcare - Certificate in Early Learning and Care
11	Hairdressing - Year 1	35	Special Needs Assistant
12	Hairdressing Apprenticeship	36	Advanced Special Needs Assistant
13	Advanced Cert in Hairdressing (RPL)	37	Applied Social Studies
14	Alternative Health & Wellbeing Therapies	38	Advanced Certificate in Social Care
15	Business Studies	39	Legal Studies and Criminal Law <i>NEW COURSE</i>
16	Office Administration for Business, Medical & Legal Practices	40	Pre Third Level Arts
17	Advanced Certificate in Business	41	Sports Studies, Coaching & Performance
18	Accounting Technician Apprenticeship	42	Sports Studies, Physiology & Massage
19	Tourism and Travel Industry Studies	43	Fitness and Health
20	Hospitality Operations	44	Sports Therapy & Injury Management
21	Construction Technology Services & Energy Efficiency	45	Pre Further Education Course
22	Computer Systems and Networks	46	Pre Apprenticeship Programme <i>NEW PROGRAMME</i>
23	Multimedia Production	47-51	VTOS - Vocational Training Opportunities Scheme
24	Security Systems Technology	52	Progression

# GENERAL INFORMATION

- WCFE provides the broadest range of further education courses in the south-east.
- WCFE courses open up direct employment opportunities.
- WCFE courses can provide access to third-level education.
- WCFE is registered with QQI. We offer programmes leading to **Quality and Qualifications Ireland (QQI)** awards on the National Framework of Qualifications and have agreed quality assurance procedures with QQI.

## Costs

See website: [www.wcfe.ie](http://www.wcfe.ie)

## Student Grants

If you think you are eligible for a student grant, you should apply through the website: [www.susi.ie](http://www.susi.ie)

If you have any queries contact **0761 08 78 74** or email: [support@susi.ie](mailto:support@susi.ie)

## BACK TO EDUCATION ALLOWANCE

If you are unemployed, parenting alone or have a disability and getting certain payments from the Department of Social Protection or signing for credits, you may be eligible for the Back to Education Allowance (BTEA). Information is available from the Department of Social Protection.

## Location

The college is located in the city centre, close to the city bus and train stations. A public car park is available approximately three minutes walk from the college.

**Whole-time Class Hours:** 9.15am - 4.30pm

## Schools Liaison

### THE FOLLOWING SERVICES ARE PROVIDED:

**School Visits:** WCFE are happy to visit your school to give information on our courses and facilities.

To book contact [wcfefinfo@wwetb.ie](mailto:wcfefinfo@wwetb.ie)

**Career Exhibitions:** WCFE participates in many career exhibitions within the region.

**Open Day:** WCFE Open Day will take place annually. Please check our website for details.

# STUDENTS WITH DISABILITIES

Waterford College of Further Education is committed to a policy of equal opportunity and welcomes applications from students with documented disabilities and specific learning needs. Students with specific learning difficulties or other disabilities may be entitled to additional supports and services to successfully complete their programme of choice. The College aims to provide support and help for such students within the limits of available resources (namely the HEA Fund for Students with Disabilities\*\*).

## Who might be eligible?

The phrase 'people with disabilities' includes people with physical disabilities, people who are visually impaired; people who are deaf or hard of hearing; people with specific learning difficulties, such as dyslexia, people with mental health problems and people with significant health or medical problems.

## What do you need to do?

- Students with a disability have a responsibility to disclose their disability/ specific learning difficulty and to request reasonable accommodations in assessment.
- To apply for reasonable accommodations in assessment a student needs to complete the Application Form for Reasonable Accommodation in Assessment and provide evidence of appropriate up to date, relevant medical/ psychological reports to the Disability Support Office.
- Once appropriate, up-to-date, relevant medical/ psychological reports are provided, applications for funding can be made. Documentation may include educational psychologist reports or consultants letters. (Diagnosis from GPs are not acceptable in any circumstances as confirmation of disability).
- The Disability Support Office is located opposite the staff room on the first floor of the main building.

*\*\*The Fund for Students with Disabilities allocates funding to further and higher education colleges for the provision of services and supports to full-time students with disabilities. The Fund aims to ensure that students can participate fully in their academic programmes and are not disadvantaged by reason of a disability.*



## Application Procedures

- The closing date for the receipt of applications for the first round of interviews for all courses is advertised on our website.
  - Please check our website for the closing date for the receipt of applications for the first, second and third round of interviews. Applicants who apply will be called for interview in due course.
  - Offers of places will be subject to completion of an interview and the achievement of the minimum entry requirements.
  - Applicants will be notified of their interview results in May.
  - Late applications received are subject to the availability of places in the summer and early September.
  - Closing date for receipt of late applications for interviews is 31<sup>st</sup> August.
  - As places on all courses are limited, application before this date is strongly advised.
  - Courses commence in early September, but only if sufficient numbers are enrolled.
  - Only one application form should be submitted. Where more than one application is made, only the most recent will be processed.
- **Apply online at [www.wcfe.ie](http://www.wcfe.ie)**

## Entry Requirements

- A. Unless otherwise stated, the minimum requirements for admission to courses are: Successful completion of Leaving Certificate/Leaving Certificate Applied or equivalent and successful completion of interview.
- B. 'Successful completion of Leaving Certificate' is defined as a minimum of five O6/H7 grades.
- C. A minimum pass grade on the Leaving Certificate Applied is acceptable as equivalent to B. above.
- D. A pass grade in the LCVP link module is acceptable as the equivalent of a pass in one of the five Leaving Certificate subjects mentioned in B. above.
- E. Foundation level subjects are acceptable.
- F. Please see 'Non-Standard Applicants' for applicants who present with school leaving examinations other than the Leaving Certificate.

- G. Mature / adult students with no formal qualifications are welcome to apply. Mature students are defined as those aged 23 or over at the beginning of the academic year.
- H. Students for whom English is a second language will be required to take and pass an English language test set by the college.
- I. Students requiring assistive technology and/or personal support services as a result of a disability are strongly advised to inform the interview panel of their needs in this area in order to allow for provision of same.

## Non-Standard Applicants

These are defined as applicants whose application is based on examination results other than the Irish Leaving Certificate.

For the purposes of registration, all non-standard applicants must provide documentation to prove that their qualifications are recognised by the National Qualifications Authority of Ireland. ([www.qualificationsrecognition.ie](http://www.qualificationsrecognition.ie))

As this process may take some months to arrive at a conclusion, prospective applicants are advised to initiate contact as soon as possible.

### DISCLAIMER

The information in this booklet is intended to act as a guide to persons seeking admission to the College and shall not be deemed to constitute a contract between the college or any third party. References to the requirements of outside bodies are not intended to be complete or exhaustive at the time of publication since they are subject to change. Accordingly, those interested are advised to make direct contact with the bodies concerned to ascertain their up-to-date requirements. Every effort is made to ensure the accuracy of the information in this publication. However, the college reserves the right to amend, change or delete any programme of study or academic regulation at any time having given due consideration to students who are already enrolled. Furthermore, the college reserves the right to alter or delete any of the information included at any time and it shall not be bound by any errors or omissions and cannot accept liability in respect thereof.

# ART & DESIGN PORTFOLIO

QQI Level 5 - Art/Craft/Design (5M1984)



## COURSE CONTENT

- Drawing
- Painting
- Design
- Animation Layout Design
- Sculpture
- Photography
- Appreciation of Art/Craft/Design
- Communications
- Work Experience

## CAREER PROSPECTS

- Fine Art
- Graphic Design (Visual Communications)
- Industrial & Product Design
- Interior Design
- Fashion Design
- Animation
- Craft
- Photography
- Art and Design Education

## COURSE DESCRIPTION

This is an intensive one-year course designed to provide experience in all the essential areas of art and design. If you want to prepare a portfolio for application to third-level art courses or if you have an interest in art and would like to develop existing skills, the Art and Design Portfolio course will provide you with the opportunity to do so. This course will introduce you to a wide range of subjects and broaden your understanding of materials, techniques and processes.

## MINIMUM ENTRY REQUIREMENTS

- Leaving Certificate/ Leaving Certificate Applied or equivalent.
- Successful completion of interview.
- Applicants are also requested to bring a portfolio containing between 5-10 pieces of recent artwork, which may include sketchbooks, to the interview.

## DURATION

One year

## CERTIFICATION

- QQI Level 5 - Art/Craft/Design (5M1984)

## PROGRESSION

The full QQI Level 5 Certificate facilitates entry, on a competitive basis, to a range of third-level institutions nationwide and progression to Level 6 Advanced Certificate in Photography, see page 6.

Further details are available from the relevant institutions.

- Specific progression links are available with SETU Waterford and Carlow for this course (see Page 54).

## ADDITIONAL COSTS

Costs for course materials should be anticipated. For more information visit [www.wcfe.ie](http://www.wcfe.ie)

**N.B.:** Due to ongoing developments in QQI awards, names and content are subject to change.

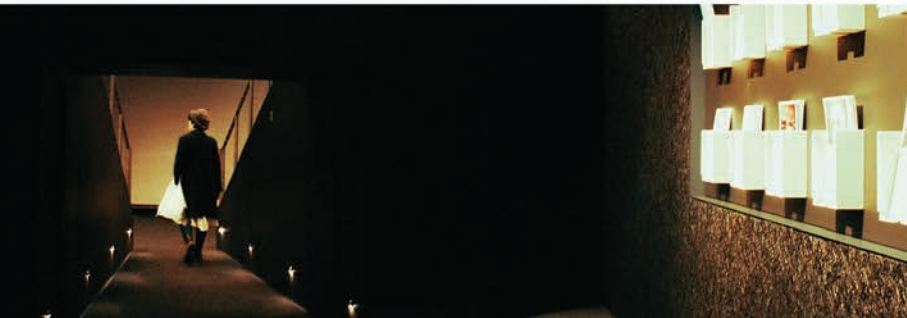


[www.facebook.com/WaterfordCFE](http://www.facebook.com/WaterfordCFE)



# PHOTOGRAPHY AND MOVING IMAGE

QQI Level 5 - Photography (5M2094)



## COURSE DESCRIPTION

Embark on an inspiring journey into visual storytelling with our Photography & Moving Image course. Immerse yourself in the timeless artistry of traditional photography and study visual communication through digital media. Learn about camera operation, composition, lighting, and digital post-processing. Capture compelling portraits in our studio and on location. Experience the enchantment of traditional black & white photography in our darkroom. Master Adobe Creative Suite for image editing and enhancement. Explore the integration of photography into motion pictures, learning video recording techniques and essential post-production processes. Delve into photography's rich history, cultivating a critical eye for visual representation. This comprehensive program prepares you for a successful career in photography and related fields, whether you aspire to be a fine art photographer, portrait specialist, or multimedia artist. Elevate your skills and excel in the captivating world of photography and digital movie processing.

## MINIMUM ENTRY REQUIREMENTS

- Leaving Certificate/Leaving Certificate Applied or equivalent.
- Successful completion of interview.
- Applicants are also requested to bring a portfolio containing 5-10 pieces of recent artwork, which may include sketchbooks, to the interview.

## PLEASE NOTE

*Students are expected to supply their own 35mm SLR Manual Camera.*

## DURATION

One year

## CERTIFICATION

- QQI Level 5 - Photography (5M2094)

## PROGRESSION

The full QQI Level 5 Certificate facilitates entry, on a competitive basis, to a range of third-level institutions nationwide.

The full QQI Level 5 Photography Certificate will also qualify for entry to the WCFE Level 6 Advanced Certificate in Photography, see page 6.

Further details are available from the relevant institutions. Specific progression links are available with SETU for this course (see page 54).

## WORK EXPERIENCE

Work experience placement is an integral part of this course. Students must obtain one day per week work experience for the academic year. The day will be specified by the college.

## FACILITIES AND SOFTWARE

- An extensive darkroom and processing area for Black & White analogue printing
- A spacious photography studio with professional lighting systems
- Full access to the Adobe Suite of Digital Media Packages.

## COURSE CONTENT

- Digital Photography
- Traditional Black & White Photography
- NEW MODULE Digital Movie Processing
- Portrait Photography
- Photography Techniques
- Image Processing
- History of Photography & Visual Culture
- Communications
- Work Experience

## CAREER PROSPECTS

- Photographer
- Photographic Processing Assistant
- Advertising
- General Practice
- Industrial Photography
- Commercial Photography
- Fashion Photography
- Photographic Processing Technician
- Press Photography
- Visual Content Creator for Social Media
- Photojournalist/Documentary Photographer
- Videographer/Video Editor



# ADVANCED PHOTOGRAPHY

QQI Level 6 - Advanced Certificate in Photography (6M3732)



## COURSE CONTENT

- Digital Photography
- Fashion Photography
- Fine Art Photography
- Creative Darkroom Techniques
- The History of Photography
- Communications
- Personal and Professional Development
- One QQI Level 5 Module (5 credits) preferably Image Processing or Photography Techniques may be used to complete the requirements for the Level 6 Award.

## CAREER PROSPECTS

- Photographer
- Photographic Processing Assistant
- Advertising
- General Practice
- Industrial Photography
- Commercial Photography
- Fashion Photography
- Photographic Processing Technician
- Press Photographer

## COURSE DESCRIPTION

The aim of the QQI Level 6 Photography programme is to provide the learner with the opportunity to acquire the knowledge, skill and competence to work independently in a professional photographic setting or to progress to further higher education and training. Through a series of workshops, lectures and self-directed learning, designed to develop and enhance the students visual, creative and theoretical awareness, this educational process aims to equip the learner with the skills necessary to produce a visually successful and coherent body of photographic work and the ability to articulate their work practice when necessary. Upon completion of the Level 6 programme, students gain significant experience by organizing a professional graduate exhibition.

## DURATION

One year

## CERTIFICATION

- QQI Level 6 - Advanced Certificate in Photography (6M3732)

**N.B.:** Due to ongoing developments in QQI awards, names and content are subject to change.

## MINIMUM ENTRY REQUIREMENTS

- Applicants should have successfully completed QQI Level 5 Photographic Studies or QQI Level 5 Art, Craft and Design.

## PROGRESSION

The full QQI Level 6 Award facilitates entry, on a competitive basis, to a range of third-level institutions offering Art and Design and Photographic Studies.

- Specific progression links are available with SETU Waterford and Carlow for this course (see Page 54).

## ADDITIONAL COSTS

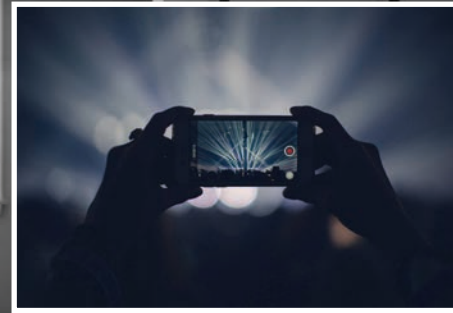
Costs for course materials should be anticipated. For more information visit [www.wcfe.ie](http://www.wcfe.ie)

## PLEASE NOTE

Students are expected to supply their own 35mm SLR, Manual Film and Digital Cameras.

# JOURNALISM, PHOTOGRAPHY, CREATIVE WRITING AND VIDEO

QQI Level 5 - Journalism (5M2464)



## COURSE DESCRIPTION

This exciting new course offers the best of both worlds- journalism AND photography, offering you superb employment and third level progression opportunities. You will learn to tell compelling stories through writing, photography, film and radio. A variety of additional creative elements like scriptwriting, studio engineering, podcasting and creative visual work, are also explored. This course is the ideal foundation for a broad range of third level courses in the humanities or media. It is also ideal for anyone looking to establish themselves as a writer, podcaster, film maker or journalist. Students are encouraged to aim for full creative expression, so they can understand themselves and the world through their work.

*Student membership of the NUJ is available to students on this course*

## MINIMUM ENTRY REQUIREMENTS

- Leaving Certificate/ Leaving Certificate Applied or equivalent.
- Successful completion of interview.

## DURATION

One year

## CERTIFICATION

QQI Level 5 - Media Production (5M18518)

## PROGRESSION

The full QQI Level 5 Certificate facilitates entry, on a competitive basis, to a range of third-level institutions nationwide. Further details are available from the relevant institutions. Successful completion of this course will facilitate progression to related courses at Ballyfermot College of Further Education and will also facilitate entry to Level 6 and 7 courses in related areas.

There is also a Level 6 progression course, Adv. Cert in Audiovisual Media and Film available at WCFE. Graduates of this course may apply for the final year of a Media Studies Hons Degree at the University of Sunderland

- Specific progression links are available with SETU Waterford and Carlow for this course (see Page 54).

## WORK EXPERIENCE

Work experience placement is an integral part of this course. Students must obtain one day per week work experience for the academic year. The day will be specified by the college. Students have access to an on-campus sound recording studio and radio production facility as part of their training programme.

## COSTS

A student services contribution of €200 is payable on registration. The purpose of which is to cover services, materials, and supports including printing, photocopying, library, student cards etc. This is non refundable.

## COURSE CONTENT

- Writing Skills for Journalism
- Prose Fiction
- Radio Programme Production
- Research Skills for Journalism
- Media Analysis
- Digital Editing
- Communications
- Work Experience
- Documentary Photography

## CAREER PROSPECTS

- Journalism
- Photography
- Radio
- Advertising Agencies
- Newspapers/Magazines
- Magazines
- Marketing
- Public Relations
- Publishing
- Writing
- Film Production



# SOUND ENGINEERING AND MUSIC TECHNOLOGY

QQI Level 5 - Sound Production (5M2149)



## COURSE CONTENT

- Sound Engineering & Production
- Music Industry Studies
- Music Technology
- Digital Video Editing
- Radio Programme Production
- Communications
- Work Experience
- Image Processing

## CAREER PROSPECTS

- Sound Engineering
- Music Journalism
- Local Radio
- Music Promotion
- D.J.
- Game Audio Production
- Film Audio Production

**N.B.:** Due to ongoing developments in QQI awards, names and content are subject to change.



[www.facebook.com/WaterfordCFE](https://www.facebook.com/WaterfordCFE)

## COURSE DESCRIPTION

A full-time course for students interested in a career in music/sound engineering/music promotion and journalism. The course examines the music industry with a particular emphasis on visual and sound technologies and music production as well as audio production for film and the games industry. Students have access to an on-campus sound recording studio and radio production facility as part of their training programme.

This course is the ideal foundation for a broad range of third-level courses in the humanities, music, visual design, game design, Internet related degrees and video production. It also provides students with the necessary skills to create, record, master and promote their own music independently.

## MINIMUM ENTRY REQUIREMENTS

- Leaving Certificate/ Leaving Certificate Applied or equivalent.
- Successful completion of interview.

## DURATION

One year

## CERTIFICATION

- QQI Level 5 - Sound Production (5M2149)

## PROGRESSION

Our Level 6 Advanced Audio Visual Media programme offers on-site progression for students on this course. Successful completion of this course will facilitate progression to related courses at Ballyfermot College of Further Education and will also facilitate entry to Level 6 and 7 courses in related areas.

The full QQI Level 5 Certificate facilitates entry, on a competitive basis, to a range of third-level institutions nationwide. Further details are available from the relevant institutions. Specific progression links are available with SETU Waterford and Carlow for this course (see Page 54).

There is also a Level 6 progression course, Adv. Cert in Audiovisual Media and Film available at WCFE. Graduates of this course may apply for the final year of a Media Studies Hons Degree at the University of Sunderland.

## SOFTWARE

- 11 Suite
- Ableton Live instead of Live 11

## ADDITIONAL COSTS

The costs for course materials should be anticipated. For more information visit [www.wcfe.ie](http://www.wcfe.ie)



# ADVANCED CERTIFICATE IN AUDIOVISUAL MEDIA & FILM

QQI Level 6 - Advanced Certificate in Media Production (6M5130)



## COURSE DESCRIPTION

An exciting and experimental course for the digital age, ideally suited to anyone who wishes to pursue a career in journalism, music, game design, visual arts or creative multimedia.

It will focus on documentary production and story-telling, communication through waveform and music, creation of soundscapes for games and film and experimentation with audio/ visual technology. Students will be encouraged to experiment with modern modes of communication to create new sensory experiences for the audience. The course will foster creative communication using perspective, digital platforms and mixed media. It will examine how reality is documented and created and will also look at how individuals construct alternative realities within the world of gaming, advertising and social media.

If you have a story to tell, a sound to create, a dimension to build or a new reality in your head you will find this an engaging and accessible course. It would also be ideal for those interested in setting up their own media production company or furthering their studies in film, broadcasting, music or multimedia design.

This course is the ideal platform for a broad range of third-level courses in the humanities, film, game design, sound and music production, research, writing and broadcasting.

Apply online at: [www.wcfe.ie](http://www.wcfe.ie)

## DURATION

One year

## CERTIFICATION

- QQI Level 6 - Advanced Certificate in Media Production (6M5130)

## MINIMUM ENTRY REQUIREMENTS

- Applicants should have successfully completed a QQI Level 5 Certificate, ideally in any of the following areas; Media, Sound Production, Art Craft & Design, Multimedia, Photography.
- Successful completion of interview.

## PROGRESSION

The full QQI Level 6 Award facilitates entry, on a competitive basis, to a range of third-level institutes nationwide. Further details are available from the relevant institutes.

Students who successfully complete QQI Level 6 Advanced Certificate in Media Production can also apply for the Studies Programme at the University of Sunderland, UK.

## FACILITIES

Students enjoy access to a professional recording studio and digital radio facility on campus. Students may also wish to avail of NUJ membership for the duration of the course.

## COURSE CONTENT

- Radio Documentary Production
- Documentary Production (Visual)
- Multimedia Sound
- Sound Engineering and Music Technology
- Media Ethics and Legal Framework
- Media Industry Awareness
- Communications
- Work Experience

## CAREER PROSPECTS

- Media / Multimedia Production Company
- Online Journalism
- Broadcast Journalism
- Music
- Broadcast Sound Engineering
- Sound Technician/ Sound Engineering
- Game Design
- Creative Multimedia Development
- Digital Advertising
- Visual Communications
- Audio/Visual Installation Design
- Environment/Sensory Design

# BEAUTY THERAPY (YEAR 1)



Andrea Donoghue (right) represented Ireland in the beauty therapy section at the World Skills in Brazil in September 2015. Andrea was awarded the Medallion of Excellence.

## COURSE CONTENT

- Dermalogica Facial Treatments
- Facial Electrical Treatment
- Manicure & Pedicure
- Make-Up & High Fashion Make-Up
- Waxing
- Anatomy and Physiology
- Business & Salon Design Studies

## CAREER PROSPECTS

- Health Spa/Leisure Centres
- Company Representative
- Make-Up Artist
- Cruise Liner Therapist
- Beauty Salons
- Self-Employment
- Teaching
- Skin Care Consultant

## ADDITIONAL COURSES (OPTIONAL)

- Specialised High Fashion Make-Up – Certified
- Shellac Nails – Certified
- Gel Nails – Certified

## COURSE DESCRIPTION

This is a full-time course including both practical and theoretical training in aspects of beauty therapy.

The course leads to diplomas of international recognition. We have a high standard of training with our students receiving awards at National and International Level, opening up a wide range of employment opportunities worldwide.

## MINIMUM ENTRY REQUIREMENTS

- Leaving Certificate/ Leaving Certificate Applied or equivalent.
- Successful completion of interview.
- Biology is not a requirement.
- Mature students welcome.

## CERTIFICATION

- ITEC - Beauty Specialist Diploma
- ITEC - Diploma in Facial Electrical Treatments
- QQI Level 5 - Beauty, Industry & Ethics (5N3470) (1 Component Certificate)
- CIBTAC - Diploma in Aesthetic Treatments

Follow us on Facebook: Beauty Therapy at Waterford College of Further Education  
Follow us on Instagram: @wcfetheatricalmakeup and @beauty\_therapy\_at\_wcfe

**N.B.:** Due to ongoing developments in QQI awards, names and content are subject to change.

## EXAMINING BODIES

- ITEC
- QQI
- CIBTAC

## DURATION

One year

## PROGRESSION

A pre-requisite for progression onto Level 6 (Year 2) IPL, Microdermabrasion and Body Treatments. Progression is dependant on attainment of ITEC Beauty Specialist and ITEC Facial Electrics or CIBTAC Aesthetic Treatments or equivalent and successful completion of an interview.

## ADDITIONAL COSTS

There are no college tuition fees, however there are additional costs for uniforms, textbooks and training kits.  
For more information visit [www.wcfe.ie](http://www.wcfe.ie)



[www.facebook.com/WaterfordCFE](http://www.facebook.com/WaterfordCFE)



# ADVANCED BEAUTY THERAPY WITH IPL, MAKE-UP & SPA TREATMENTS (YEAR 2)



## COURSE DESCRIPTION

This is a full-time course including practical and theoretical training in aspects of Beauty & Body Therapy. This course leads to internationally recognised qualifications. We have a high standard of training with our students regularly receiving awards at National and International Level, opening up a wide range of employment opportunities worldwide.

## MINIMUM ENTRY REQUIREMENTS

- ITEC Beauty Specialist & ITEC Facial Electrics or equivalent together with successful interview.
- Mature students welcome with the above pre-requisite and do a successful interview.
- Students can transfer from other colleges provided we have available spaces, they have the above pre-requisite and do a successful interview.

## CERTIFICATION

- CIDESCO – Beauty Therapy International Diploma
- AIT Accredited - Lash and Brow Treatments
- ITEC - Award in Photographic Make-Up
- QQI - Microdermabrasion & Laser IPL Level 6 (6N3474)

## DURATION

One year

## EXAMINING BODIES

- ITEC • CIDESCO • QQI

## ADDITIONAL COSTS

There are no college tuition fees, however, there are additional costs for textbooks and kits.

## NOTE

New students to W.C.F.E. will need to purchase uniform, towels, kits, textbooks and salon shoes.

## PROGRESSION

Progression onto the Alternative Health & Well-Being Therapies course is dependent on a successful interview. Alternative Health & Well-Being Therapies enables the student to build on their knowledge and qualifications and includes ITEC Reflexology, ITEC Holistic Massage, QQI Level 5 in Nutrition and QQI Level 6 in Indian Head Massage.

## COURSE CONTENT

- Photographic Make-Up
- Laser IPL + Microdermabrasion
- Body Massage/Body Electrics
- Body Analysis
- Spa Treatments - Body Polish/ Mud Wraps
- Salon Work Experience
- Facial Treatments
- Photographic Make-Up

## CAREER PROSPECTS

- Make-Up Artist
- Laser Clinic Therapist
- Skincare Consultant
- Teaching
- Self-Employment
- Spa/Leisure Centre
- Company Representative
- Cruise Liner
- Qualifications to travel Internationally

## ADDITIONAL COURSES (OPTIONAL)

- Advanced Waxing - Certified
- Gel Nails - Certified

Follow us on Facebook: [Beauty Therapy at Waterford College of Further Education](#)  
Follow us on Instagram: [@wcfetheatricalmakeup](#) and [@beauty\\_therapy\\_at\\_wcfe](#)



# HAIRDRESSING - YEAR 1



## COURSE CONTENT

- Hairdressing Theory and Practice
- Hairdressing Science
- Barbering Techniques
- Creative Styling
- Work Experience
- Communications
- Safety and Health

## CAREER PROSPECTS

- Hair Salon - 2<sup>nd</sup> Year Apprentice
- Cruise Liner
- Company Representative
- Hair Retail Outlet

Apply online at: [www.wcfe.ie](http://www.wcfe.ie)

## COURSE DESCRIPTION

This is a full-time course which involves on-and-off-the-job intensive training. It provides students with the range of practical skills and theoretical knowledge required for the hairdressing industry. Training is provided in two fully-equipped modern salons. As part of this course, other experts from the industry hold workshops with the class throughout the year. This course provides an excellent pathway into the Hairdressing Apprenticeship, allowing a student develop links with salons and get a feel for the industry.

## CERTIFICATION

- QQI - Level 5 Hairdressing Certificate (5M3351)

## MINIMUM ENTRY REQUIREMENTS

- Leaving Certificate/ Leaving Certificate Applied.
- Successful completion of interview.
- Mature students welcome.

## WORK EXPERIENCE

- One day per week
- Two week block in December

## PROGRESSION

QQI (5M3351) is recognized by the recognition of prior learning process to gain advanced entry to Stage 2 of the Hairdressing Apprenticeship.

## ADDITIONAL COSTS

There are no college tuition fees, however students are required to pay for course fees and exam fees. Students will also be required to purchase salon materials, a hairdressing kit and uniform. For more information visit [www.wcfe.ie](http://www.wcfe.ie)



[www.facebook.com/WaterfordCFE](http://www.facebook.com/WaterfordCFE)



## COURSE DESCRIPTION

The Hairdressing Apprenticeship is a practical route into a career in hairdressing where you will earn while you learn. Apprentices work four days a week with their employer and one day a week in college. Apprentices will be supported in the workplace by an approved mentor and in the classroom by their teacher. Apprentices will graduate after three years as a fully qualified Hairdresser with a QQI Level 6 award on the National Framework of Qualifications.

## ENTRY REQUIREMENTS

- QQI Level 4 Major Award, or recognized equivalent e.g. Leaving Certificate, or two years full-time experience working within a salon.
- CEFR L B2+ level of English (where English is not a first language).

## NON-STANDARD ENTRY

In a case where an applicant does not meet the educational requirements specified above, they must satisfactorily complete an informative panel interview facilitated by the Program Manager.

## CERTIFICATION

Advanced Certificate in Hairdressing, QQI Level 6 Major Award on the National Framework of Qualifications. This Certificate

is not only recognized nationally but also has international currency.

## PROGRESSION

- Qualified Hair Stylists have diverse career opportunities available to them. Many work in a salon as a senior stylist, Senior Colour Technician, Style Director, Salon Manager or Salon Owner.
- The Advanced Certificate in Hairdressing is also a gateway to third-level education through which candidates may wish to acquire a management or business degree, as well as other specialist areas.

## DURATION

Three years minimum

## ADVANCED ENTRY

- Applications with the following can apply for Advanced Entry to Stage 2 of the programme.
- QQI Level 5 Major Award in Hairdressing (5M3351)
- Two Years full time experience working within a hair salon.
- **Applications can be made by the Hair Salon to [www.hairdressingapprenticeship.ie](http://www.hairdressingapprenticeship.ie)**  
\* Applications are not made through WCFE.ie

## COURSE CONTENT

### STAGE 1

- Induction
- Health and Safety
- Client Consultation
- Shampooing, Conditioning and Treatments
- Styling and Finishing 1
- Salon Reception and ICT Skills
- Colour 1
- Cutting 1

### STAGE 2

- Customer Service and Retail
- Styling and Finishing 2
- Colour 2
- Cutting 2
- Team Leadership
- Career in Action

### STAGE 3

- Perming and Neutralising Hair
- Cutting 3
- Colour 3
- Styling and Finishing 3
- Capstone Module







# ALTERNATIVE HEALTH & WELL-BEING THERAPIES



## COURSE DESCRIPTION

This is a full-time course leading to professional qualifications. Students will receive a sound knowledge of Holistic Therapies from ancient philosophies to modern-day teaching. As part of their training, students will learn to take a holistic approach, treating body, mind and spirit, thereby guiding their client towards better health and general well-being.

## MINIMUM ENTRY REQUIREMENTS

- Leaving Certificate/ Leaving Certificate Applied or Equivalent.
- Successful completion of interview.
- Mature students welcome.

## EXAMINING BODIES

- ITEC
- QQI

## DURATION

One year

## CERTIFICATION

- ITEC – Diploma in Holistic Massage
- ITEC – Diploma in Reflexology Treatments
- QQI – Nutrition Level 5 (5N2006)
- QQI – Indian Head Massage Level 6 (6N3477)

## ADDITIONAL COSTS

There are no college tuition fees, however, there are additional costs for uniforms, books and salon kits. Additional courses are optional will depend on student numbers. Students will be notified in October regarding the cost of these additional courses.

## ADDITIONAL COURSES (OPTIONAL)

Certified / Non-Certified

- Reiki Levels 1 & 2 Certified
- Crystal Therapy Non-Certified

## COURSE CONTENT

- Holistic Massage
- Reflexology
- Indian Head Massage
- Nutrition
- Anatomy and Physiology
- Business Studies
- Yoga/ Meditation  
*non-certified*

## CAREER PROSPECTS

- Qualifications to travel Internationally
- Self-Employment
- Massage Therapist
- Reflexologist
- Indian Head Massage Therapist
- Freelance – Hospitals, Care Centres, Hospices
- Cruise Liners
- Spas/Health Centre
- Holistic Centres

Follow us on Facebook: [Beauty Therapy at Waterford College of Further Education](#)

**N.B.:** Due to ongoing developments in QQI awards, names and content are subject to change.







### COURSE DESCRIPTION

This course is an intensive full-time course which will provide students with the knowledge and skills to work in a variety of office or reception environments, enhanced by participation in work experience.

The Medical Terminology module develops students' knowledge, skills and competence enabling them to work as a medical receptionist or in an administrative role in a medical practice, clinic or hospital context.

Studying the Legal Practice and Procedures module, students are given an overview of legal structures in Ireland, its court system and branches of Civil and Criminal Law, which will support their progression to finding employment as a legal administrator.

Including modules such as Manual & Computerised Payroll and Spreadsheet Methods develops a huge range of transferrable skills, sought after by employers and therefore opens up several extra opportunities for employment for our graduates

### MINIMUM ENTRY REQUIREMENTS

- Leaving Certificate/ Leaving Certificate Applied or equivalent.
- Successful completion of interview.
- Mature applicants are welcome.

### PROGRESSION

- The full QQI Level 5 Certificate will also qualify for entry to the WCFE Level 6 Advanced Certificate in Business.
- The full QQI Level 5 Certificate facilitates entry, on a competitive basis, to a range of third-level institutions nationwide. Further details are available from the relevant institutions.
- Specific progression pathways to SETU Waterford and Carlow are agreed (see Page 54).

### CERTIFICATION

QQI Level 5 - Office Administration (5M1997)

### ADDITIONAL COSTS

There are no tuition fees, however, the cost for course materials such as text books should be anticipated. For more information visit [www.wcfe.ie](http://www.wcfe.ie)

### WORK EXPERIENCE

Work experience placement in a range of local office environments is an integral part of this course. Students must obtain one day per week work experience for the academic year in a relevant environment. The day will be specified by the college.

### DURATION

One year

### COURSE CONTENT

- Work Experience
- Medical Terminology
- Legal Practice & Procedures
- Payroll Manual & Computerised
- Spreadsheet Methods
- Word Processing
- Text Production
- Information & Administration
- Communications

### CAREER PROSPECTS

- Medical Practices
- Law Firms
- Accounts and Payroll Departments
- General Office or Reception Work in all types of Business Organisations
- Clerical Officer positions within the Public Sector

**N.B.:** Due to ongoing developments in QQI awards, names and content are subject to change.





# ACCOUNTING TECHNICIAN APPRENTICESHIP

QQI Level 6 - Advanced Certificate in Accounting



## COURSE DESCRIPTION

The Accounting Technician Apprenticeship is a practical route to a career in accountancy where you will earn while you learn on a two-year, fully funded programme, and pay no tuition costs.

Employers from industry, practice and the public sector, offer two-year contracts on this National Apprenticeship programme.

You will work four days a week with the employer and study one day a week in college.

## APPLICANTS

The apprenticeship is suitable for:

- School-leavers (18-22 years old) who prefer practical training to full-time academic study and students who thrive in an environment where they are putting learning into practice every day.
- Mature learners (aged 23 years or above) who are looking to change career or move into a finance role.
- Employees who are already working with a participating employer and who would like to move into a finance role.

For information on eligibility and recruitment phases visit:

[www.accountingtechnicianapprenticeship.ie](http://www.accountingtechnicianapprenticeship.ie)

## CERTIFICATION

- QQI Level 6 - Advanced Certificate in Accounting

## DURATION

Two years part-time

## PROGRESSION

- Chartered Accountants Ireland (CAI), the Association of Chartered Certified Accountants (ACCA), the Institute of Certified Public Accountants (CPA) and the Chartered Institute of Management Accountants (CIMA), offer members of Accounting Technicians Ireland substantial exemptions.

**NOTE: Applications are online to Accounting Technician Apprenticeship.**

## COURSE CONTENT

### Year 1

- Financial Accounting
- Taxation
- Business Management
- Business Law

### Year 2

- Advanced Financial Accounting
- Advanced Taxation
- Management Accounting
- Financial Data Management

## CAREER PROSPECTS

- Accounting Technicians are employed throughout all levels of finance across the public sector, industry, private accountancy practices and self-employment.
- They perform a wide range of roles including bookkeeping, financial accounting and budgeting, costing and credit control, payroll administration and tax returns.

# TOURISM AND TRAVEL INDUSTRY STUDIES

QQI Level 5 - Tourism with Business (5M5011)

Waterford Airport



## COURSE CONTENT

- Tourism Information and Administration
- Tourism Principles and Practice
- Customer Service
- Work Experience
- Word Processing
- Marketing Practice
- Cabin Crew Operations
- Global Distribution Systems

## CAREER PROSPECTS

- Airlines as Cabin Crew
- Airports as Passenger Services Agent
- Travel Agencies
- Hotels and Cruise Lines
- Tour Operators
- Guides

**N.B.:** Due to ongoing developments in QQI awards, names and content are subject to change.



[www.facebook.com/WaterfordCFE](https://www.facebook.com/WaterfordCFE)

## COURSE DESCRIPTION

This course is designed for applicants who wish to develop their career prospects within the travel industry. It will offer AMADEUS, IAOT and QQI Certification. On completion of this course, applicants can apply to third-level tourism courses or work directly in the travel and tourism industry.

## SUPPLEMENTARY TRAINING INCLUDES:

- IAOT Ready to Book
- IAOT Ready to Check-in
- IAOT Ready to Fly
- IAOT Interview with Confidence

## MINIMUM ENTRY REQUIREMENTS

- Leaving Certificate successfully completed/ Leaving Certificate Applied with minimum pass level award.
- Successful completion of interview.

## PROGRESSION

The full QQI Level 5 Certificate facilitates entry, on a competitive basis, to a range of third-level institutions nationwide. Further details are available from the relevant institutions.

- Specific progression links are available with SETU Waterford and Carlow for this course (see Page 54).

## CERTIFICATION

- Certificate: QQI Level 5 - Tourism with Business (5M5011)
- Advanced Diploma: Travel Industry Studies (includes Amadeus and Ready for Take-Off)

Endorsed by:

- The International Academy of Travel (IAOT)
- Amadeus, Ireland
- The World Travel Centre, FAREBANK
- QQI

## WORK EXPERIENCE

Work experience placement is an integral part of this course. Students must obtain one day per week work experience for the academic year. The day will be specified by the college.

## DURATION

One year





## COURSE DESCRIPTION

A full-time course designed to prepare students for the Hotel & Catering Industry in collaboration with the Dept. of Languages, Tourism & Hospitality of SETU.

## MINIMUM ENTRY REQUIREMENTS

- Leaving Certificate/ Leaving Certificate Applied or equivalent.
- Successful completion of interview.

## PROGRESSION

The full QQI Level 5 award facilitates entry, on a competitive basis, to a range of third level institutions nationwide. Further details are available from the relevant institutions.

- Specific progression links are available with SETU Waterford and Carlow for this course (see Page 54).

## CERTIFICATION

- QQI Level 5 - Hospitality Operations (5M2083)

## ADDITIONAL COSTS

Costs for course materials should be anticipated.

## WORK EXPERIENCE

Work experience placement is an integral part of this course. It will consist of two block placements (to be specified by the college) and/or day release.

## DURATION

One year

## COURSE CONTENT

- Food Preparation
- Accommodation Techniques
- Communications
- Work Experience
- Food Science and Technology
- Menu Planning and Applied Nutrition
- Safety and Health at Work
- Word Processing

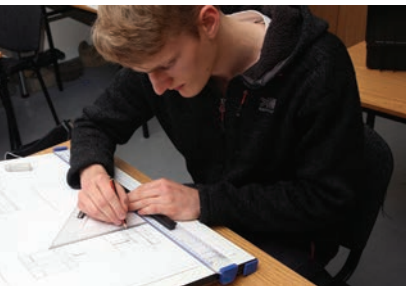
## CAREER PROSPECTS

- Tourism Information
- Hotels
- Restaurants
- Guest Houses

**N.B.:** Due to ongoing developments in QQI awards, names and content are subject to change.

# CONSTRUCTION TECHNOLOGY SERVICES AND ENERGY EFFICIENCY

QQI Level 5 - Construction Technology (5M5010)



## COURSE CONTENT

- Architectural Drawing
- Building Construction
- Communications
- Computer-Aided Drawing
- Material Science
- Work Experience
- Safety and Health

## CAREER PROSPECTS

- Project Manager
- Site Supervisor
- Construction Engineer
- Quantity Surveyor
- Architect
- Cad Technician.
- Also suitable for trade entry if desired.

*A SafePass is required for anyone entering a construction site to work. For those who do not have one, we will organise a Safe Pass course in October.*



[www.facebook.com/WaterfordCFE](https://www.facebook.com/WaterfordCFE)

## COURSE DESCRIPTION

This practical training programme is intended for students who wish to work in the carpentry/joinery, electrical, plumbing and block laying sectors of the construction industry or who wish to seek entry to Apprenticeships/SOLAS (FAS)/ Further Training. It also prepares students for progression to third-level.

### Sustainable Building

The course will also give students access to new technologies used in the building sector, such as thermographic imaging and insulation systems and processes.

## MINIMUM ENTRY REQUIREMENTS

- Leaving Certificate/ Leaving Applied or equivalent.
- Successful completion of interview.

## DURATION

One year

## CERTIFICATION

- QQI Level 5 - Construction Technology (5M5010)

## PROGRESSION

The full QQI Level 5 Certificate facilitates entry, on a competitive basis, to a range of third-level institutions nationwide. Further details are available from the relevant institutions.

- Specific progression links are available with SETU Waterford and Carlow for this course (see Page 54).

## WORK EXPERIENCE

Work experience placement is an integral part of this course. Learners must obtain one day per week of work experience for the academic year. The day will be specified by the college. A Safe Pass is required for the work experience module on this course and is required for anyone entering a construction site. Learners are encouraged to come on the course with the Safe Pass. If learners do not have a Safe Pass completed one can be facilitated during the first college term.

## ADDITIONAL COSTS

A Safe Pass is required for this course. For those who do not have one, we will organise a Safe Pass course in October. For more information visit [www.wcfe.ie](http://www.wcfe.ie)



# COMPUTER SYSTEMS AND NETWORKS

QQI Level 5 - Computer Systems and Networks (5M0536)



## COURSE DESCRIPTION

This full-time course is designed to teach students the skills necessary to implement and support PC systems and networks. During the course students will build PCs and troubleshoot hardware issues. They install, optimise and troubleshoot both the Windows and Linux Operating Systems, and setup Local Area Networks.

Course participants will learn about the importance of security within the IT industry while also learning the fundamentals of Software Development and Website Design. This course prepares participants for careers within Computer Systems Maintenance and Technical Support, Software Development and Web Design.

With the experience that our students gain during the course, many graduates go on to work in the IT sector in areas such as technical support or in field service roles. Many graduates continue their studies to obtain degrees in Applied Computing or Information Technology.

## MINIMUM ENTRY REQUIREMENTS

- Leaving Certificate/ Leaving Certificate Applied or equivalent.
- Successful completion of interview.
- Applications from mature students will be considered.

## DURATION

One year

## CERTIFICATION

QQI Level 5 — Computer Systems and Networks (5M0536)

## WORK EXPERIENCE

Work experience placement is an integral part of this course. Students must obtain one day per week work experience for the academic year in a computing related environment. The day will be specified by the College.

## DURATION

One Year

## COSTS

A student services contribution of €200 is payable on registration. The purpose of which is to cover services, materials, and supports including printing, photocopying, library, student cards etc. This is non-refundable.

## PROGRESSION

The full QQI Level 5 Certificate facilitates entry, on a competitive basis, to a range of third-level institutions nationwide. Further details are available from the relevant institutions. Specific progression links are available with SETU Waterford & Carlow Campus for this course.

## COURSE CONTENT

- Computer Systems Hardware
- Operating Systems
- Networking Essentials
- ICT Security Policy Management
- Programming Design Principles
- Maths for Information Technology
- Communications
- Work Experience
- Web Design

## CAREER PROSPECTS

- In-house Computer Maintenance
- Network Maintenance
- Technical Support Sectors
- Network Support Sectors
- PC Manufacturing
- Field Support Technician
- Software Development
- Website Design

N.B. Due to ongoing developments in QQI awards, names and content are subject to change.

# MULTIMEDIA PRODUCTION

QQI Level 5 - Multimedia Production (5M2146)



## COURSE CONTENT

- Design
- Video
- Web Authoring
- Image Processing
- Multimedia Authoring
- Multimedia Project Development
- Work Experience
- Communications

## CAREER PROSPECTS

- Web Design
- Multimedia Production
- Software Production
- Interactive Instructional Design

## COURSE DESCRIPTION

Discover the exciting world of multimedia production with our cutting-edge course. At WCFE, we are proud to offer a dynamic Multimedia Production program that empowers you to create engaging and interactive digital content. Whether you're passionate about web design, multimedia storytelling, or harnessing the power of technology to captivate audiences, this course will equip you with the skills and knowledge you need. Dive into the art of web authoring and multimedia authoring and unlock your creative potential as you learn from industry experts and gain hands-on experience. Join us on a journey where your ideas and innovation come to life on the digital canvas, and embark on a career that shapes the future of digital media. Your adventure begins here

## MINIMUM ENTRY REQUIREMENTS

- Leaving Certificate/ Leaving Certificate Applied or equivalent.
- Successful completion of interview.
- Applications from mature students will be considered.

## DURATION

One year

## CERTIFICATION

- QQI Level 5 - Multimedia Production (5M2146)

## PROGRESSION

The full QQI Level 5 Certificate facilitates entry, on a competitive basis, to a range of third-level institutions nationwide. Further details are available from the relevant institutions.

WCFE has an annual agreement with LIT (Clonmel) in relation to progression from this Multimedia Course.

- Specific progression links are available with SETU Waterford for this course (see Page 54).

## WORK EXPERIENCE

Work experience placement in a range of local business environments is an integral part of this course. Students must obtain one day per week work experience for the academic year. The day will be specified by the college.

## ADDITIONAL COSTS

The cost for course materials should be anticipated. For more information visit [www.wcfe.ie](http://www.wcfe.ie)



[www.facebook.com/WaterfordCFE](http://www.facebook.com/WaterfordCFE)



# ELECTRONICS, ROBOTICS AND SECURITY SYSTEMS TECHNOLOGY

QQI Level 5 – Security Systems Technology (5M2109)



## COURSE DESCRIPTION

This full-time course is designed to teach students the skills necessary to work in many growing areas within the Engineering/Technology sector, along with the installation of Intruder Alarm Systems and Closed-Circuit TV Surveillance systems.

The course also introduces students to software development and robotics through the use of Arduino microcontrollers as well as 3D modelling and 3D printing. Students will also learn how to design, build, and test various electronic circuits.

With the experience that our students gain in areas such as cabling systems and electronics, many graduates go on to do apprenticeships in the electrical sector or continue their studies to obtain degrees in electrical/mechanical engineering. Many graduates start working in the security/intruder alarm industry upon completion of the course.

## MINIMUM ENTRY REQUIREMENTS

- Leaving Certificate/ Leaving Certificate Applied or equivalent.
- Successful completion of interview.

## DURATION

One year

N.B.: Due to ongoing developments in QQI awards, names and content are subject to change.

## CERTIFICATION

- QQI Level 5 - Security Systems Technology 5M2109

## PROGRESSION

The full QQI Level 5 Certificate facilitates entry, on a competitive basis, to a range of third-level institutions nationwide. Further details are available from the relevant institutions. Specific progression links are available with SETU Waterford & Carlow Campus for this course.

## COSTS

A student services contribution of €200 is payable on registration. The purpose of which is to cover services, materials, and supports including printing, photocopying, library, student cards etc. This is non-refundable.

## WORK EXPERIENCE

Work experience placement is an integral part of this course. Students must obtain one day per week work experience for the academic year in a technology/engineering-based environment. The day will be specified by the College.

## PATHWAYS TO APPRENTICESHIP PROGRAMME

- Electrical Apprenticeship
- Commercial/ Private Security Systems / Automation Access Systems/ Closed Circuit Camera
- Systems

## COURSE CONTENT

- Electronics
- Emerging Technology (including Robotics, Coding & 3D Printing)
- Intruder Alarms & Access Control
- Closed Circuit TV and Lighting
- Cable and Pre- installation Techniques
- Mathematics
- Safety & Health at Work
- Work Experience
- Communications

## CAREER PROSPECTS

- Electronic Technicians
- Electricians
- Process Technicians
- Maintenance Technicians
- Field Service Engineers
- Intruder Alarm Sales, Installation and Maintenance CCTV Systems Sales, Installation and Maintenance

## EMERGING TECHNOLOGY

The course will give students practical access to some of the latest emerging technologies such as Robotics, Microcontrollers and 3D printing.

# ANIMAL CARE & CANINE GROOMING

QQI Level 5 - Animal Care (5M2768)



## COURSE CONTENT

- Animal Grooming
- Small Animal Husbandry
- Animal Welfare
- Animal Anatomy and Physiology
- Animal Behaviour
- Customer Service
- Work Experience
- Communications

## CAREER PROSPECTS

- Grooming Studios
- Dog/ Cattery Kennels
- Vet Clinics
- Animal Sanctuaries
- Self Employment
- Further/Third-Level Education

## COURSE DESCRIPTION

A one year course of specific interest to applicants wishing to pursue a career in the Dog Grooming/Animal Husbandry industry. Applicants will study a range of subjects relating to animal care and grooming. Emphasis will be placed on the skills and practices required to work in a modern dog grooming studio. Field trips and guest speakers are part of the course.

## MINIMUM ENTRY REQUIREMENTS

- Successful completion of Leaving Certificate/ Leaving Certificate Applied.
- Mature students and applicants with prior learning will also be considered.

## DURATION

One year

## CERTIFICATION

- QQI Level 5 - Animal Care (5M2768)

## PROGRESSION

The full QQI level 5 certification facilitates entry, on a competitive basis, to a range of third-level institutions nationwide and QQI Level 6 Advanced Animal Science.

## WORK EXPERIENCE

Work experience placement is an integral part of this course. Students must obtain one day per week work experience for the academic year. The day will be specified by the college.

## ADDITIONAL TRAINING

Veterinary Council Recognition

- Canine CPR
- Canine Nutrition
- Start Your Own Business



[www.facebook.com/WaterfordCFE](https://www.facebook.com/WaterfordCFE)



# ANIMAL SCIENCE & CANINE GROOMING

QQI Level 5 - Animal Care (5M2768)



## COURSE DESCRIPTION

A one year course of specific interest to applicants wishing to pursue a career in the Dog Grooming/Animal Care industry. Applicants will study a range of subjects relating to animal care and grooming. Emphasis will be placed on the skills and practices required to pursue a career in animal care and allow for progression to both Veterinary Nursing and Science at third-level. Field trips and guest speakers are part of the course.

## MINIMUM ENTRY REQUIREMENTS

- Successful completion of Leaving Certificate/ Leaving Certificate Applied.
- Mature students and applicants with prior learning will also be considered.

## DURATION

One year

## CERTIFICATION

- QQI Level 5 - Animal Care (5M2768)

**N.B.:** Due to ongoing developments in QQI awards, names and content are subject to change.

## PROGRESSION

The full QQI Level 5 certification facilitates entry, on a competitive basis, to a range of third-level institutions nationwide and progression to Animal Science/Canine Studies QQI Level 6 (6M5153) in the WCFE.

## WORK EXPERIENCE

Work experience placement is an integral part of this course. Students must obtain one day per week work experience for the academic year. The day will be specified by the college.

## ADDITIONAL TRAINING

- Veterinary Council Recognition
- Canine CPR
  - Canine Nutrition
  - Start Your Own Business

## COURSE CONTENT

- Animal Grooming
- Animal Welfare
- Animal Anatomy and Physiology
- Animal Behaviour
- Work Experience
- Communications
- Maths
- Biology
- Word Processing

## CAREER PROSPECTS

- Grooming Studios
- Dog/Cattery Kennels
- Vet Clinics
- Animal Sanctuaries
- Self Employment
- Further/ Third-Level Education

Apply online at: [www.wcfe.ie](http://www.wcfe.ie)

# ADVANCED ANIMAL SCIENCE

QQI Level 6 - Animal Science (6M5153)



## COURSE CONTENT

- Animal Science and Health
- Customer Service
- Work Experience
- Kennel and Cattery Management
- Animal Grooming
- Animal Humans and Society
- Canine Obedience and Training
- Veterinary Assisting Skills

## ADDITIONAL COURSES

- Veterinary Assisting Skills QQI Level 5
- Canine Obedience Training

## CAREER PROSPECTS

- Grooming Parlours
- Boarding Kennels
- Animal Welfare Organisations
- Animal Clinics and Catteries

## COURSE DESCRIPTION

This one year course is designed as a follow on from the QQI Level 5 Animal Care course. It will provide the student with the experience to further develop their skills in animal grooming, animal welfare, training and management. Emphasis will be placed on exploring different aspects of animal care for those interested in working in Animal Care professions. Field trips and guest speakers are part of the course.

## MINIMUM ENTRY REQUIREMENTS

- Students who have successfully completed Level 5 Animal Care.
- Mature applicants with relevant experience. Successful completion of interview.

## DURATION

One year

## CERTIFICATION

- QQI Level 6 - Animal Science (6M5153)

## PROGRESSION

With entrepreneurship in mind the Level 6 course can develop skills valuable to those interested in managing their own business or expanding their employability to other areas of the animal care industry, including, day-care, obedience and training, walking and working with Animal Welfare Organisations. Progression to 3rd Level institutions nationwide.

## WORK EXPERIENCE

Work experience is an integral part of this course. Students must obtain one day per week work experience for the academic year. The day will be specified by the college.

**NOTE: Subject to WWETB approval**



[www.facebook.com/WaterfordCFE](https://www.facebook.com/WaterfordCFE)



# PHARMACY ASSISTANT

QQI Level 5 - Community Health Services (5M4468)



## COURSE DESCRIPTION

A full-time course offering comprehensive training for participants interested in working in the Retail Pharmacy Sector. Students will gain a knowledge of science based subjects, IT skills, 'Over the Counter Medicines' and customer service experience.

## MINIMUM ENTRY REQUIREMENTS

- Successful completion of Leaving Certificate/ Leaving Certificate Applied.
- Successful completion of interview.
- Applications from mature candidates will also be considered.

## DURATION

One year

## CERTIFICATION

- QQI Level 5 - Pharmacy Assistant – Community Health Services (5M4468)

**N.B.:** Due to ongoing developments in QQI awards, names and content are subject to change.

## PROGRESSION

- Participants may seek employment within the Retail Pharmacy Sector.
- In addition a full QQI Level 5 Certificate facilitates entry, on a competitive basis, to a range of third-level institutions.
- Successful candidates may apply to Pharmacy Technician courses or other related Science/Health community based programmes.
- Specific progression pathways to SETU Waterford and Carlow are agreed (see Page 54).

## WORK EXPERIENCE

Work Experience placement in a related vocational area is an integral part of this course. Students must obtain work experience placement themselves.

## COURSE CONTENT

- Nutrition
- Health & Safety in the Workplace
- Communications
- Work Experience
- Beauty Industry - Ethics and Practice
- Word Processing
- Medical Terminology
- Anatomy and Physiology
- IPU Certificate in Medical Counter Assistance

## CAREER PROSPECTS

- Pharmacy Healthcare Advisor
- Cosmetic Sales Assistant
- Pharmacy Field Sales Representative
- Pharmacy Store Manager
- Medical Counter Assistant

Apply online at: [www.wcfe.ie](http://www.wcfe.ie)





# GENERAL STUDIES WITH APPLIED PSYCHOLOGY

QQI Level 5 - General Studies with Applied Psychology (5M3114)



## COURSE DESCRIPTION

A full-time course that will be of interest and benefit to those who would like to develop a career in the care, diagnosis and treatment of mental illness. This course is a springboard to higher education courses in Psychology, Business Psychology, Applied Psychology, Social Studies and Counselling.

## MINIMUM ENTRY REQUIREMENTS

- Successful completion of Leaving Certificate/ Leaving Certificate Applied.
- Successful completion of interview.
- Applications from mature students and those with relevant prior learning will also be considered.

## DURATION

One year

## CERTIFICATION

- QQI Level 5 - General Studies with Applied Psychology (5M3114)

## PROGRESSION

The full QQI Level 5 Certificate facilitates entry, on a competitive basis, to a range of third level institutions nationwide. Further details are available from the relevant institutions.

Examples: NUI Maynooth BA (Hons) Psychology; Dublin Business School BA (Hons) Psychology, BA (Hons) Psychology (Part Time), Higher Diploma in Arts in Psychology; NUI Galway Bachelor of Arts (Psychology).

## WORK EXPERIENCE

Work experience is not a factor of this course as students will complete the course module QQI Level 5 Personal and Professional Development.

## COSTS

There are no tuition fees. However, students will be required to purchase textbooks. For more information visit [www.wcfe.ie](http://www.wcfe.ie)

## COURSE CONTENT

- Criminology
- Communications
- Research & Study Skills
- Statistics
- Conflict Resolution
- Psychology
- Family Studies

## CAREER PROSPECTS

- Psychology and Counselling
- Social Work
- Social and Home Care

Apply online at: [www.wcfe.ie](http://www.wcfe.ie)

**N.B.:** Due to ongoing developments in QQI awards, names and content are subject to change.







# HEALTHCARE SUPPORT/HEALTH SERVICE SKILLS

QQI Level 5 - Healthcare Support (5M4339) or QQI Level 5 - Health Service Skills (5M3782)



## COURSE DESCRIPTION

A choice of two full-time awards providing students with the knowledge and experience to obtain future employment in the health services, hospitals, nursing homes or in the community.

## MINIMUM ENTRY REQUIREMENTS

- Leaving Certificate/ Leaving Certificate Applied or equivalent.
- Successful completion of interview.
- Garda vetting is a requirement on place acceptance.

## WORK EXPERIENCE

Work experience placement in a related vocational area is an integral part of this course. Day release and one day block placement. Students must obtain work placement themselves.

## CERTIFICATION

- QQI Level 5 - Healthcare Support (5M4339)  
or
- QQI Level 5 - Health Service Skills (5M3782)

## DURATION

One year

## PROGRESSION

- The full QQI Level 5 Certificate facilitates entry, on a competitive basis, to a range of third-level institutions nationwide. Further details are available from the relevant institutions.
- Progression links exist for Level 7 Bachelor of Science in Applied Health Care in SETU Waterford.
- Specific progression links are available with SETU Waterford. and Carlow for this course (see Page 54).

## ADDITIONAL COSTS

The following costs should be anticipated:

- Work Placement Uniform
- Books

For more information visit [www.wcfe.ie](http://www.wcfe.ie)

## COURSE CONTENT

- Care Support
- Health and Safety at Work
- Care Skills
- Communications
- Work Experience
- Infection Prevention and Control
- Nutrition
- Care of the Older Person
- First Aid Responder
- Manual & Patient Handling
- Crisis Intervention Training

## CAREER PROSPECTS

- Healthcare Assistants
- Disability Care
- Nursing Home Care
- Hospital Care Assistants
- Level 7 – BSc in Applied Healthcare, WIT

Apply online at: [www.wcfe.ie](http://www.wcfe.ie)



### COMPONENT SPECIFICATIONS

- Anatomy and Physiology
- Infection Prevention & Control
- Communications
- Nursing Theory and Practice
- Nutrition
- Human Growth & Development
- Care Skills
- Work Experience
- First Aid Responder
- Manual & Patient Handling
- Crisis Intervention Training

### CAREER PROSPECTS

- Nursing
- Community Care
- Paramedical Careers
- Social Studies
- Level 7 – BSc in Applied Healthcare, SETU Waterford

### COURSE DESCRIPTION

A full-time course offering a practical and theoretical introduction to the world of nursing, community care and health-related careers.

### MINIMUM ENTRY REQUIREMENTS

- Five O6/H7 Leaving Certificate subjects which include both Mathematics and one Science subject.
- Successful completion of interview.
- Garda vetting is a requirement on place acceptance.

### DURATION

One year

### CERTIFICATION

- QQI Level 5 – Nursing Studies (5M4349)

### WORK EXPERIENCE

Work experience placement in a related vocational area is an integral part of this course. Day release and one day block placement. Students must obtain work experience themselves.

### PROGRESSION

- The full QQI Level 5 Certificate facilitates entry, on a competitive basis, to a range of third-level institutions.
- In addition, successful completion of this course may facilitate progression to cognate programmes at a number of UK universities.
- Progression links exist for Level 7 Bachelor of Science in Applied Health Care in SETU Waterford.
- Specific progression links are available with SETU Waterford and Carlow for this course (see Page 54).

### COSTS

Students should anticipate costs for Nursing Studies, including materials such as textbooks. For more information visit [www.wcfe.ie](http://www.wcfe.ie)

### PLEASE NOTE

Students wishing to apply for Level 8 nursing programmes in Ireland must satisfy the minimum requirements of The Nursing and Midwifery Board of Ireland. (NMBI) ([www.nursingcareers.ie](http://www.nursingcareers.ie))





# CHILDCARE - CERTIFICATE IN EARLY LEARNING AND CARE

Stage 1: QQI Level 5 Certificate in Early Learning and Care (5M21473)  
(Optional) Stage 2: QQI Level 6 Advanced Certificate in Early Learning and Care (6M21471)



## COURSE CONTENT

### STAGE 1 (YEAR 1)

- Professional Practice Placements in Early Learning and Care

Two settings:

- Birth – 2.8 years
- 2.8 years – 6 years

- Children's Rights, Legislation and Regulation
- Holistic Care of Children (0 - 6 years)
- Early Childhood Growth and Development
- Curriculum, Play and Creative Studies
- Understanding and Assisting Children with Additional Needs

### STAGE 2 (YEAR 2) (Optional)

- Advanced Professional Practice Placements in Early Learning and Care

Two settings:

- Birth – 2.8 years
- 2.8 years – 6 years

- Sociology and Social Policy in Early Learning and Care
- The Developing Child
- Curriculum and Pedagogy
- Inclusive Early Learning and Care
- Supervision and Administration in Early Learning and Care

## CAREER PROSPECTS

- Early Years Educator
- Lead Early Years Educator

### COURSE DESCRIPTION

This full-time course prepares learners to work as a Childcare practitioner with young children and/or to take responsibility as Room Leader/Supervisor in a variety of early learning and care settings. This award also provides the learner with the opportunity to progress into further and higher education and training.

### MINIMUM ENTRY REQUIREMENTS

- Leaving Certificate/ Leaving Certificate Applied or equivalent.
- Applicants whose first language isn't English need to have a B2 competence in an English language test.
- Successful completion of interview.
- Applicants will be required to undertake Garda vetting. International students must also provide Police vetting from the country/countries where they have previously lived.
- If you already have a Level 5 Certificate in ECCE you may be eligible to enter in stage 2 – talk to the Course Coordinator for more information.

### CERTIFICATION

- Stage 1 (Year 1) QQI Certificate in Early Learning and Care NFQ Level 5 (5M21473)
- Stage 2 (Year 2) QQI Advanced Certificate in Early Learning and Care NFQ Level 6 (6M21471)

### DURATION

This is a one-year full-time course. Learners will achieve a Level 5 Certificate in Early Learning and Care on successful completion of the stage 1 modules. Level 5 Early Learning and Care graduates may choose to continue to stage 2 (second year) to achieve a QQI Level 6 Advanced Certificate in Early Learning and Care.

### COSTS

There are no tuition fees, however, students will be required to purchase textbooks. For more information visit [www.wcfe.ie](http://www.wcfe.ie)

### WORK EXPERIENCE

Work experience placement is an integral part of this course. Students must obtain one day per week work experience for the academic year. The day will be specified by the college. There will be a two week block placement at the end of the first term. Students are required to gain experience of working with babies and toddlers aged from birth to 2 years 8 months, and pre-school children aged 2 years 8 months to 6 years.

### PROGRESSION

The NFQ Level 5 Certificate in Early Learning and Care and the NFQ Level 6 Advanced Certificate in Early Learning and Care facilitate entry, on a competitive basis, to a range of third-level institutions nationwide.

# SPECIAL NEEDS ASSISTANT

QQI Level 5 - Intellectual Disability Practice (5M1761)



## COURSE CONTENT

- Intellectual Disability Studies
- Empowering the Individual
- Community Inclusion
- Facilitating Learning
- Work Experience
- Challenging Behaviour
- First Aid Response
- Patient Manual Lifting and Handling
- Non-Violent Crisis Intervention Training (NVCIT)
- Teamworking
- Human Growth and Development

## CAREER PROSPECTS

- Primary Schools - Special Needs Assistant
- Personal Assistant
- Second Level Schools - Special Needs Assistant
- Out of School Projects
- Back to School Projects

## COURSE DESCRIPTION

This full-time course prepares students to work as a Special Needs Assistant in school settings. It is suitable for both school-leavers and for experienced mature persons seeking a formal qualification.

## MINIMUM ENTRY REQUIREMENTS

- Leaving Certificate/ Leaving Certificate Applied or equivalent.
- Successful completion of interview.
- Written references.
- Applicants will be required to undertake Garda vetting. International students must also provide Police vetting from the country/countries where they have previously lived.

## WORK EXPERIENCE

Work experience placement in a related vocational area is an integral part of this course. Students must obtain one day per week work experience for the academic year. The day will be specified by the college. There will be two weeks of block placement at the end of the first term.

## DURATION

One year

## CERTIFICATION

- QQI Level 5 - Intellectual Disability Practice (5M1761)

## PROGRESSION

The full QQI Level 5 Certificate facilitates entry, on a competitive basis, to a range of third-level institutions nationwide and QQI Level 6 Advanced Certificate in Social Care, and QQI Level 6 Special Needs Assistant. Further details are available from the relevant institutions, and/or on the QQI website [www.qqi.ie](http://www.qqi.ie).

- Specific progression links are available with SETU Waterford and Carlow for this course (see Page 54).

## COSTS

A student services contribution of €200 is payable on registration. The purpose of which is to cover services, materials, and supports including printing, photocopying, library, student cards etc. This is non refundable.

For more information visit [www.wcfe.ie](http://www.wcfe.ie)



[www.facebook.com/WaterfordCFE](http://www.facebook.com/WaterfordCFE)



# ADVANCED SPECIAL NEEDS ASSISTANT

QQI Level 6 - Inclusive Education and Training (6M2263)



## SPECIAL EDUCATION

### COURSE DESCRIPTION

The purpose of this course is to enable the learner to acquire the knowledge skill and competence, to design, promote and implement best practice in inclusive education in a range of contexts and settings and/or to progress to higher education and training.

### MINIMUM ENTRY REQUIREMENTS

- Level 5 Learning and Care (5M21473)
- Intellectual Disability Practice (5M1761)
- Social Care.
- Healthcare Support.
- Successful completion of Interview.
- Applications from mature students will be considered.
- Applicants will be required to undertake Garda vetting. International students must also provide Police vetting from the country/countries where they have previously lived.
- Written references.

### WORK EXPERIENCE

Work experience placement in a related vocational area is an integral part of this course. Students must obtain one day per week work experience for the academic year.

### DURATION

One year

### CERTIFICATION

- QQI Level 6 - Inclusive Education and Training (6M2263)

### PROGRESSION

The full QQI Level 6 Award facilitates entry, on a competitive basis, to a range of third-level institutions nationwide. Further details are available from the relevant institutions.

- Specific progression links are available with SETU Waterford and Carlow for this course (see Page 54).

### COSTS

A student services contribution of €200 is payable on registration. The purpose of which is to cover services, materials, and supports including printing, photocopying, library, student cards etc. This is non refundable.

For more information visit [www.wcfe.ie](http://www.wcfe.ie)

**N.B.:** Due to ongoing developments in QQI awards, names and content are subject to change.

### COURSE CONTENT

- Disability Awareness
- Differentiated Learning Instruction
- Inclusive Education Practice
- Work Experience
- Team Leadership
- Mental Health Awareness
- Learning Difficulty Awareness
- Health Promotion

### CAREER PROSPECTS

- Supervision in a Special Needs Setting
- Primary Schools - Special Needs Assistant
- Personal Assistant
- Second Level Schools - Special Needs Assistant
- Out of School Projects
- Back to School Projects

Apply online at: [www.wcfe.ie](http://www.wcfe.ie)

# APPLIED SOCIAL STUDIES

QQI Level 5 - Applied Social Studies (5M2181)



## COURSE CONTENT

- Intercultural Studies
- Legal Practice and Procedures
- Community Arts Practice
- Psychology
- Social Studies
- Political Studies
- Conflict Resolution
- Work Experience
- Patient and Manual Handling
- Occupational First Aid
- MAPA© Management of Actual and Potential Aggression

## CAREER PROSPECTS

- Youth Worker
- Care Assistant
- Support Work
- Disability Care
- Nursing Home Care
- Residential Care

Apply online at: [www.wcfe.ie](http://www.wcfe.ie)

## COURSE DESCRIPTION

The course introduces students to the broad area of social care. It is a foundation /springboard into social care work and social worker progression courses or can lead directly into the workplace.

## MINIMUM ENTRY REQUIREMENTS

- Leaving Certificate/ Leaving Certificate Applied or equivalent.
- Successful completion of interview.
- Applications from mature students will be considered.
- Applicants will be required to undertake Garda vetting.
- Written references.

## PROGRESSION

The full QQI Level 5 Certificate facilitates entry, on a competitive basis, to a range of third-level institutions nationwide. Further details are available from the relevant institutions. Progression to the Advanced Certificate in Social Care in WCFE is also possible.

- Specific progression links are available with SETU Waterford and Carlow for this course (see Page 54).

## DURATION

One year

## CERTIFICATION

- QQI Level 5 - Applied Social Studies (5M2181)

## WORK EXPERIENCE

Work experience placement in a related vocational area is an integral part of this course. Students must obtain one day per week work experience for the academic year. The day will be specified by the college. There will also be one week of block placement in the first and second terms.

## COSTS

A student services contribution of €200 is payable on registration. The purpose of which is to cover services, materials, and supports including printing, photocopying, library, student cards etc. This is non refundable.

For more information visit [www.wcfe.ie](http://www.wcfe.ie)



[www.facebook.com/WaterfordCFE](http://www.facebook.com/WaterfordCFE)





# SOCIAL

## COURSE DESCRIPTION

This full-time course will be of benefit to those who have a particular interest in the professional aspects of social care. The course is designed for students who have already qualified in Level 5 in Social Studies, Special Needs or a course in a similar field. It will suit those who have a good knowledge of social care, seeking to progress in their professional development.

## MINIMUM ENTRY REQUIREMENTS

- QQI Level 5 certification in related areas or equivalent, with at least 4 modules passed at merit level.
- Successful completion of interview.
- Written reference.

## WORK EXPERIENCE

Work placement in a relevant environment is an essential part of this course. Students must obtain one day per week work experience for the academic year. The day will be specified by the college. There will also be a two week block placement in the first term and one week in the second term.

## CERTIFICATION

- QQI Level 6 - Social and Vocational Integration (6M2218)

## DURATION

One year

## PROGRESSION

The full QQI Level 6 award facilitates entry, on a competitive basis, to a range of third-level institutions nationwide. Successful completion of the course may facilitate exemption from the first year of specific degree courses. Further details are available from the relevant institutions and/or from [www.qqi.ie](http://www.qqi.ie).

- Specific progression links are available with SETU Waterford and Carlow for this course (see Page 54).

## GARDA VETTING

Students will be required to undergo Garda vetting procedures. Garda vetting forms will be distributed as part of the registration process.

## COSTS

A student services contribution of €200 is payable on registration. The purpose of which is to cover services, materials, and supports including printing, photocopying, library, student cards etc. This is non refundable.

For more information visit [www.wcfe.ie](http://www.wcfe.ie)

## COURSE CONTENT

- Psychology of People
- Person-Centred Planning
- Rehabilitation Practice
- Health Promotion
- Disability Awareness
- Team Leadership
- Work Experience
- Mental Health Awareness
- Occupational First Aid
- Work Practice
- Patient & Manual Handling
- MAPA© Management of Actual and Potential Aggression

## CAREER PROSPECTS

- Residential Childcare
- Youth Service
- Community Child Protection
- Family Support
- Prison System
- Disability Care
- Community Development







## COURSE DESCRIPTION

A full-time course that will be of interest to any student considering a degree in Arts in any third-level institution. Pre Third Level Arts offers a wide range of subjects across the humanities, and also features classes in important skills like research, and provides students the opportunity to explore their interests in a variety of academic areas. The course is a springboard to Arts programmes in ITs and Universities, or to more vocational routes like the Gardai or Community Arts.

## MINIMUM ENTRY REQUIREMENTS

- Successful completion of Leaving Certificate/ Leaving Certificate Applied.
- Successful completion of interview.
- Applicants from mature students and those with relevant prior learning will also be considered.
- Written references.

## CERTIFICATION

- QQI Level 5 - General Studies (5M3114)

**N.B.:** Due to ongoing developments in QQI awards, names and content are subject to change.

## DURATION

One year

## PROGRESSION

The full QQI Level 5 certificate facilitates entry, on a competitive basis, to a range of third-level institutions nationwide. The following courses would be of particular interest to graduates of Pre Third Level Arts:

- Bachelor of Arts (Hons) at SETU Waterford and DIT.
- Bachelor of Arts (Hons) at NUI Maynooth and NUI Galway.
- Bachelor of Arts at University College Galway and University of Limerick.
- Bachelor of Arts at University of Limerick with Mary Immaculate College.
- Bachelor of Arts in Applied Policing and Criminal Justice at University of Limerick.
- Bachelor of Arts (Child, Youth and Family: Policy and Practice) NUI Galway.

## COURSE CONTENT

- Criminology
- Psychology
- English
- Word Processing
- Literary, Visual and Performing Arts
- Research and Study Skills
- Communications
- Work Experience

## CAREER PROSPECTS

- While the course is designed to facilitate progression to Third-Level Arts programmes, the ultimate career options for graduates could involve teaching, the law, research, writing, or applying for Gardai.

**NOTE:** Subject to WWETB approval



# SPORTS STUDIES, COACHING & PERFORMANCE

QQI Level 5 Sports & Recreation and Exercise (5M5146)



## COURSE CONTENT

- Sports and Recreation Studies
- Exercise and Fitness
- Sports Anatomy & Physiology
- Leisure Facility Operations
- Personal Effectiveness
- Kinesiology
- Work Experience
- Nutrition
- GAA Hurling and Gaelic Football Coaching

## SPORTS

- Adventure Sports
- Badminton
- Basketball
- Hurling
- Gaelic Football
- Soccer
- Squash
- Swimming and Life Saving
- Tennis
- Cardio Tennis
- Volleyball

## CAREER PROSPECTS

- Sports Coach Leader
- Fitness Instructor
- Physical Trainer (Team Sports)
- Gym Instructor
- Leisure Attendant
- Lifeguard

## COURSE DESCRIPTION

A full-time course specialising in Sport and Sports Coaching. It aims to:

- Introduce students to Sport Studies.
- Provide a practical and theoretical foundation to fitness training.
- Enable students to acquire National Governing Body (NGB) Coaching qualifications in a number of sports.
- Provide a foundation for students wishing to study Sports and Recreation at a higher level.

## CERTIFICATION

- QQI - Level 5 Sports, Recreation Exercise (5M5146)
- Irish Water Safety (IWS) National Pool Lifeguard Qualification
- First Aid
- National Governing Body (NGB)
- Coaching Awards at appropriate level
- Speed, Agility and Quickness (S.A.Q.) Foundation/Level 1

## DURATION

One year

## MINIMUM ENTRY REQUIREMENTS

- Leaving Certificate/Leaving Certificate Applied or equivalent.
- Successful completion of interview.

## PROGRESSION

The full QQI Level 5 Certificate facilitates entry, on a competitive basis, to a range of third-level institutions nationwide. Further details are available from the relevant institutions.

- Specific progression links are available with SETU Waterford and Carlow for this course (see page 49).
- The full QQI Level 5 certificate facilitates entry, on a competitive basis, to the Sports Therapy and Injury Management course in WCFE. This course offers QQI Level 6 Sports and Recreation and ITEC Sports Therapy qualifications.

## COSTS

A student services contribution of €200 is payable on registration. The purpose of which is to cover services, materials, and supports including printing, photocopying, library, student cards etc. This is non refundable.

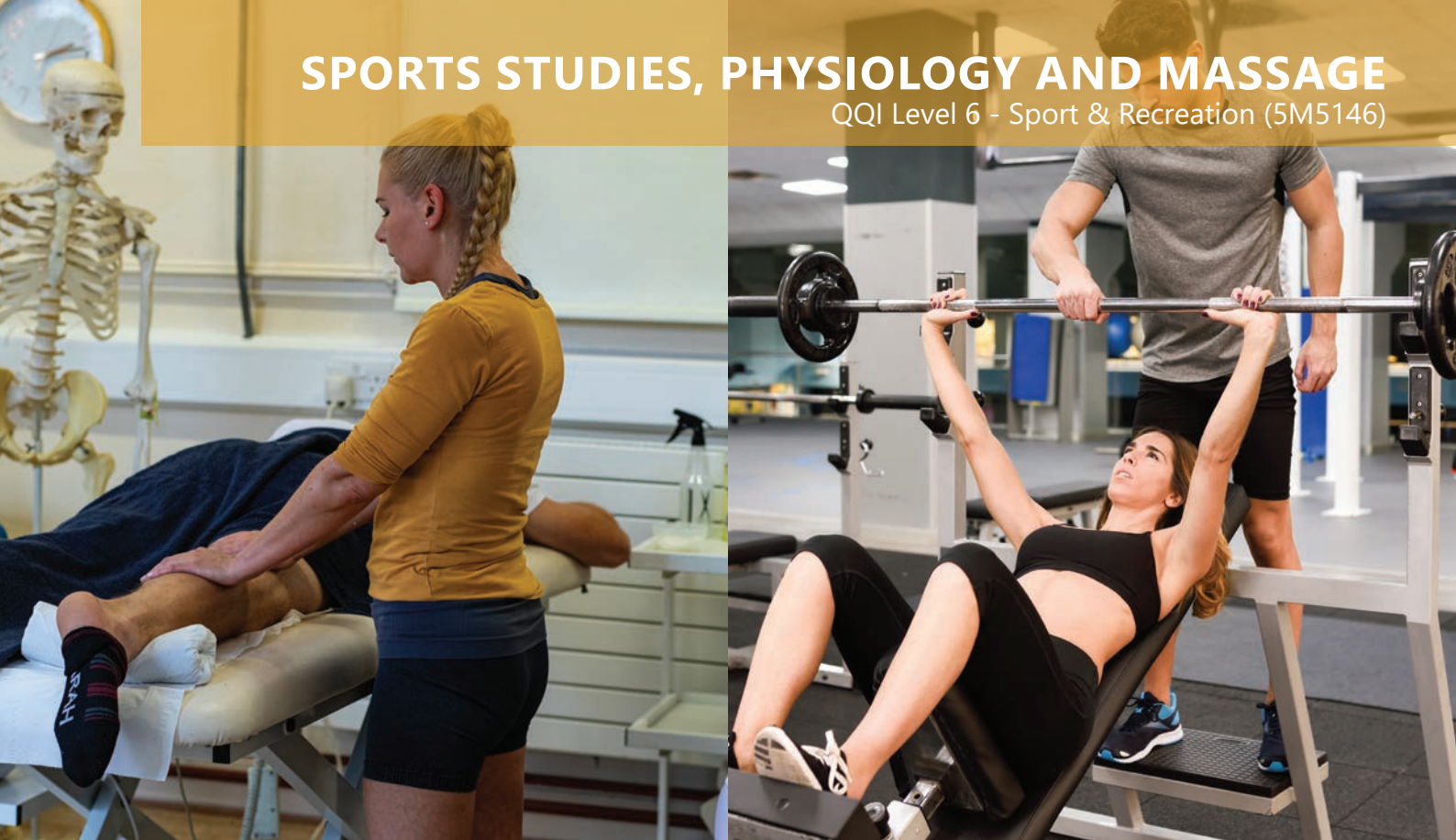
## WORK EXPERIENCE

Work experience placement is an integral part of this course. Students must arrange one day per week work experience for the academic year. The day will be specified by the College.



# SPORTS STUDIES, PHYSIOLOGY AND MASSAGE

QQI Level 6 - Sport & Recreation (5M5146)



## COURSE DESCRIPTION

This course aims to provide students with the skill and knowledge necessary for employment in the Sports and Leisure industry. It consists of both practical and theoretical training in various aspects of Sports Studies and Body Massage. It will provide the student with the knowledge to progress into other specialties in the sport and recreation/sports injury industries.

## CERTIFICATION

- QQI Level 5 - Sport & Recreation (5M5146)
- QQI - Body Massage and Figure Analysis (5N3465)
- Occupational First Aid

## MINIMUM ENTRY REQUIREMENTS

- Leaving Certificate/ Leaving Certificate Applied or equivalent.
- Successful completion of interview.

## DURATION

One year

*This course provides the qualifications needed to apply for the Level 6 Sports Therapy and Injury Management course.*

## PROGRESSION

- The full QQI Level 5 Certificate facilitates entry, on a competitive basis, to a range of third-level institutions nationwide. Further details are available from the relevant institutions.
- The full QQI Level 5 Certificate facilitates entry on a competitive basis to the Level 6 Sports Therapy and Injury Management course in WCFE. This course offers QQI Level 6 Sport and Recreation and ITEC Sports Therapy Qualifications.
- Specific progression links are available with SETU Waterford for this course (see Page 54).

## WORK EXPERIENCE

Work experience placement in a related vocational area is an integral part of this course. Students must obtain one day per week work experience for the academic year. The day will be specified by the college.

## COSTS

A student services contribution of €200 is payable on registration. The purpose of which is to cover services, materials, and supports including printing, photocopying, library, student cards etc. This is non refundable. Costs of textbooks should be anticipated.

**N.B.:** Due to ongoing developments in QQI awards, names and content are subject to change.

## COURSE CONTENT

- Sports Anatomy & Physiology
- Holistic Massage
- Body Massage and Figure Analysis
- Exercise & Fitness
- Health Related Fitness
- Sport & Exercise Injury Prevention
- Kinesiology
- Personal Effectiveness
- Work Experience
- Health & Hygiene
- Occupational First Aid
- Indian Head Massage

## CAREER PROSPECTS

- Sports Clinics
- Leisure Attendant
- Gym Instructor
- Alternative Therapy Clinics
- Massage Therapist
- Health Centres
- Physical Therapy Clinics
- Fitness Instructor





# SPORTS THERAPY AND INJURY MANAGEMENT

QQI Level 6 Sports & Recreation (6M5147)



## COURSE DESCRIPTION

This course aims to provide learners with the skill necessary to work in the sports and recreation/sports therapy industries. Sports therapists provide a valuable service to the sports industry, specialising in the prevention and management of soft tissue injuries through manual massage techniques and electrical treatments. This course will also provide learners with theoretical and practical knowledge to work in the fitness industry or to study at a higher level.

## CERTIFICATION

- QQI - Level 6 Sports & Recreation (6M5147)
- ITEC - Level 3 Award in Sports Massage Therapy
- ITEC - Level 4 Certificate in Sports Massage Therapy
- Occupational First Aid

## DURATION

One year

## MINIMUM ENTRY REQUIREMENTS

- QQI - Level 5 Sport & Recreation or equivalent.
- Successful completion of interview.

## PROGRESSION

The full QQI Level 6 Certificate facilitates entry, on a competitive basis, to a range of third-level institutions nationwide. Further details are available from relevant institutions.

- Specific progression links are available with SETU Waterford for the course (see Page 54).

## COSTS

A student services contribution of €200 is payable on registration. The purpose of which is to cover services, materials, and supports including printing, photocopying, library, student cards etc. This is non refundable. Costs of textbooks should be anticipated.

## COURSE CONTENT

- Exercise and Fitness
- Sports Industry Practice
- Health Promotion
- Sports Psychology
- Sports Nutrition
- Team Leadership
- Personal and Professional Development
- Anatomy & Physiology
- Pre & Post Event Massage
- Sports Massage Techniques
- Palpitation Techniques
- Sports Therapy Electrical Equipment
- Strapping & Taping
- Diagnosis and Practice
- Occupational First Aid
- Indian Head Massage

## CAREER PROSPECTS

- Sports Clinics
- Sports Clubs
- Alternative Therapy Clinics
- Health Centres
- Leisure Centres
- Health Farms
- Gym Instructor
- Physical Therapy Clinics
- Spa Facilities
- Fitness Instructor

# PRE FURTHER EDUCATION COURSE

General Studies (5M3114) [Component Certificate]



## COURSE CONTENT

- Personal Effectiveness
- Personal and Professional Development
- Word Processing
- ESOL [English as a Second Language]
- Customer Service
- Communications

**NOTE: Subject to WWETB approval**

## COURSE DESCRIPTION

A full-time component certificate course aimed to provide students with the opportunity to progress to a full Level 5 certificate Further Education course at WCFE. The course introduces students to methods of study, writing, research and IT skills. The course is aimed at students who do not have the entry requirement for courses at WCFE or the English language requirement for access to these courses. This course, if successfully completed would satisfy the minimum entry requirement for WCFE courses.

## DURATION

One year

## CERTIFICATION

- QQI Level 5 - General Learning (5M3114) [Component Certificate]

## MINIMUM ENTRY REQUIREMENTS

- Applicants must be over 18 years of age, who have not successfully completed a Leaving Certificate, Leaving Certificate Applied or equivalent.
- Mature applicants.
- Successful completion of interview.

## PROGRESSION

- Progression to a full Level 5 QQI Certificate at WCFE

**N.B.:** Due to ongoing developments in QQI awards, names and content are subject to change.



[www.facebook.com/WaterfordCFE](https://www.facebook.com/WaterfordCFE)



**NEW PROGRAMME**



## COURSE DESCRIPTION

This practical training course is intended for learners who want to work in the construction industry and undergo a SOLAS apprenticeship in areas such as carpentry, electrical, plumbing, block-laying or plastering. The course content is designed to give learners a variety of construction trade experiences and allow learners to make informed choices for their apprenticeship careers into the future. It also prepares students for progression to third level studies if so desired.

## DURATION

One year

## PROGRESSION

The full QQI level 5 Certificate facilitates entry to a range of third level Institutions nationwide, on a competitive basis if further studies are desired in the future.

## CERTIFICATION

QQI Level 5 Award - Construction Technology 5M5010

## WORK EXPERIENCE

Work experience placement is an integral part of this course. Learners must obtain one day per week of work experience for the academic year. The day will be specified by the college. A Safe Pass is required for the work experience module on this course and is required for

anyone entering a construction site. Learners are encouraged to come on the course with the Safe Pass. If learners do not have a Safe Pass completed one can be facilitated during the first college term.

## MINIMUM ENTRY REQUIREMENTS

- Leaving Certificate/ Leaving Cert Applied or equivalent.
- Successful completion of interview

## FOR MORE INFORMATION

Tel: (051) 874053

Email: [wcfinfo@wwetb.ie](mailto:wcfinfo@wwetb.ie)

## TO APPLY ONLINE

[www.wcfe.ie](http://www.wcfe.ie)



## COURSE CONTENT

- Building Construction
- Renewable Energy Systems
- Electrical Cabling & Pre-Installation Techniques
- Computer Aided Design (add on subject)
- Health & Safety
- Maths
- Communications
- Work Experience

## CAREER PROSPECTS

- Carpenter
- Joiner
- Plasterer
- Block layer
- Electrician
- Woodwork Machinist

# VOCATIONAL TRAINING OPPORTUNITIES SCHEME

## ADULT ACCESS

Our VTOS Adult Access Centre at Waterford College of Further Education now offers VTOS students the opportunity to achieve QQI qualifications at Levels 4 Core VTOS, Levels 5 & 6 as Dispersed students on PLC Courses with Waterford College of Further Education.

## WHY ADULT ACCESS VTOS?

- Keep social welfare payments and any secondary benefits.
- Free or subsidised costs subject to eligibility.
- Free Childcare available.
- No application, exam or registration costs.
- Continuous assessment.
- Suitable for those who have been out of the education system for some time.
- Individual support to each student.



**Eligibility for VTOS:** You must be over 21 years old, and in receipt of a social welfare payment or signing for credits for a minimum of 156 days (6 months)

**Costs:** There are no costs for applying and joining an Adult Access VTOS Course

### LEARNER AND ENGLISH LANGUAGE SUPPORT

Special attention is given to supporting those who have been out of the education system for some time with individually designed tutorials and study supports. In addition, English language lessons and English for speakers of other Languages (ESOL) are integral parts of the course for those who require the extra support.

### APPLYING FOR ADULT ACCESS COURSES

**FIRST YEAR - Students can study one of the following Core VTOS Courses**

- Level 4-Office Skills & Computing 4M2070
- Level 4-Introduction to Health Sciences 4M2010
- Level 4-Academic & Employment Skills 4M2010
- Level 4 - Business & Retail Skills 4M1998

**SECOND YEAR – Students can progress to any of the wide ranging PLC courses at WCFE Full time courses, or to a 2nd year core programme**

### COURSE DELIVERY AND FACILITIES

Programmes are full time over two academic years with students availing themselves of the opportunity to achieve QQI certification at the end of each year. VTOS courses are delivered in groups dedicated to adults as part of a larger college and also give students access to a broad range of facilities throughout the college. In year 2, students can apply as dispersed VTOS and access all PLC courses in WCEF.

### WORK SHOPS

Along with the main components, learners can participate in workshops that enhance their college experience and expand their employment opportunities.

These workshops include: external speakers, study skills, career planning, health related fitness, entrepreneurship, customer facing skills, interview preparation, personal care, presentation skills, team working, conflict resolution and occupational first aid.

### CONTACT US

Contact Denise or Gemma to discuss your options:

**Phone:** 051 874 053

**Mobile:** 086 026 3341

**Email:** [wcfinfo@wwetb.ie](mailto:wcfinfo@wwetb.ie)

[DeniseWall@wwetb.ie](mailto:DeniseWall@wwetb.ie) or [GemmaRiordan@wwetb.ie](mailto:GemmaRiordan@wwetb.ie)



[www.facebook.com/WaterfordCFE](https://www.facebook.com/WaterfordCFE)



## ADULT ACCESS OFFICE SKILLS & COMPUTING (4M2070) QQI Level 4 Office Skills



The Adult Access VTOS department delivers interesting, worthwhile and relevant courses to adults. Participants on the Adult Access Social Care course may choose from one of the following QQI certificates.

Participants on the Adult Access Administration course will receive interesting, practical and relevant knowledge that can be applied in any Office related environment. Course content includes:

- General Office Skills
- Work Experience
- Business English
- Customer Service
- Computer Applications
- Bookkeeping & Accounts
- Communications
- Digital Media Technology



### QUALIFICATIONS AND PROGRESSION

Some students enrol on our programmes to improve their existing qualifications but many choose to change career direction. Many graduates move directly into employment, and many move on to further education, both within the college and to third level. This course will give the student a solid foundation in the academic, practical and personal skills required for a career in Office Administration.

It will also set our Graduates up with an excellent knowledge base for Year Two when they will select their next direction of study for a QQI Level 5 qualification in one of the following areas within WCFE:

- Legal Studies & Criminal Law - 5M3789
- Tourism & Travel - 5M5011
- Business Studies - 5M2102

## ADULT ACCESS INTRODUCTION TO HEALTH SCIENCES (4M2070) QQI Level 4 General Learning



The Adult Access VTOS department delivers interesting, worthwhile and relevant courses to adults. Participants on the Adult Access Social Care course may choose from one of the following QQI certificates.

### COURSE DESCRIPTION

This course offers a practical and theoretical introduction to the world of nursing, community care and health care related care settings such as hospitals, nursing homes as well as gyms and sport coaching.

### COURSE CONTENT INCLUDES

- Communications
- Mathematics
- Work Experience
- Workplace Safety
- Human Biology
- Food and Nutrition
- Personal Effectiveness
- Understanding Interculturalism
- ESOL



### PROGRESSION

It can also be used as a stepping stone for Further Education studies in Health Care Support, Social Studies, Nursing Studies and Sports Therapy courses at level 5

### CERTIFICATION

It will also set our Graduates up with an excellent knowledge base for Year Two when they will select their next direction of study for a QQI Level 5 qualification in one of the following areas within WCFE:

- Nursing - 5M4349
- Healthcare Support - 5M3782
- Pharmacy Technician - 5M4468
- Fitness & Health - 5M5146
- Sports & Recreation - 5M5146
- Physiology & Massage - 5M5146



[www.facebook.com/WaterfordCFE](https://www.facebook.com/WaterfordCFE)



## ADULT ACCESS BUSINESS & RETAIL SKILLS (4M1998) QQI Level 4



The Adult Access VTOS department delivers interesting, worthwhile and relevant courses to adults. Participants on the Adult Access Social Care course may choose from one of the following QQI certificates.

### COURSE DESCRIPTION

The aim of this programme is to enable the learner to acquire the relevant knowledge, skill and competence to work effectively under supervision in the business and or retail sector.

- Communications
- Customer Service
- Retail Selling Techniques
- Personal Effectiveness
- Work Experience
- Workplace Safety
- I.T. Skills
- Understanding Interculturalism
- ESOL



### QUALIFICATIONS AND PROGRESSION

Learners can progress to further education and training, Successful Graduates can apply for Further Education course in Year 2 with WCFE, the include Tourism and Travel Industry studies, Business Studies.

QQI Level 4 Retail Selling 4M1998

- Pharmacy 5M4468
- Tourism with Business 5M5011
- Business Studies 5M2102

# VOCATIONAL TRAINING OPPORTUNITIES SCHEME

## ADULT ACCESS

## EMPLOYMENT & ACADEMIC STUDIES

(4M2010)

### Access QQI Level 4 Employment Skills



The Adult Access VTOS department delivers interesting, worthwhile and relevant courses to adults. Participants on the Adult Access Social Care course may choose from one of the following QQI certificates.

This course offers a practical and theoretical introduction to general learning and skills to assist with progression to further Education and or employment, this course is very generic and affords the learner a choice of elective\* subjects which can assist the learner with progression choices for Course at level 5.

#### COURSE CONTENT

- Communications
- IT Skills
- Mathematics
- Work Experience
- Personal Effectiveness
- Work Place Safety
- Office Skills\*
- Customer Service\*
- Understanding Interculturalism\*  
Child Development and Play\*
- ESOL



#### QUALIFICATIONS AND PROGRESSION

This course offers students the opportunity to gain relevant work experience in a preferred industry. They will learn skills to improve their candidacy when applying for employment. They will also improve academic skills such as report writing, presentations and computer literacy to build an excellent foundation to undertaking their preferred stream of study in Year Two.

It will also set our Graduates up with an excellent knowledge base for Year Two when they will select their next direction of study for a QQI Level 5 qualification in one of the following areas within WCFE:

- Animal Care - 5M2768
- Art & Photography - 5M1984
- Beauty Therapy - 5N3470
- Computing - 5M0536
- Construction & Security Systems - 5M2109
- Hairdressing - 5M3351
- Media - 5M2464



[www.facebook.com/WaterfordCFE](https://www.facebook.com/WaterfordCFE)



# PROGRESSION

## Progression Routes into Higher Education

The Higher Education Links Scheme (HELS) gives learners the opportunity to use their QQI Level 5 or 6 Major Award to apply, through the CAO, for a place in the first year of a higher education programme.

Programmes leading to Level 5 and Level 6 Major Awards are available through providers who have programmes validated with QQI.

Linked awards, special requirements and available higher education programmes are published by the admissions office of the individual higher education institution and on [www.cao.ie](http://www.cao.ie).

**Further information can also be found in QQI's publication Progression Opportunities into Higher Education.**

## SETU-WCFE Progression Agreement

Waterford Institute of Technology offers preferential entry to students who successfully complete a linked QQI FET programme in partner Colleges of Further Education (WCFE) and who meet certain criteria.

The aim of the SETU Progression Scheme is to ensure equality of opportunity and the smooth transition of learners moving from further to higher education.

**Further details are available from SETU Progression Scheme Office, SETU Waterford, Cork Road, Waterford.**

**Tel: 051 302163 | Email: [progression@wit.ie](mailto:progression@wit.ie)**

**Web: [www.wit.ie/progression](http://www.wit.ie/progression)**

## IT Carlow-WCFE Further Education Progression Pathways

IT Carlow's Further Education Progression Pathways ensures greater access to Higher Education for students who successfully complete a QQI course in a partner College of Further Education (WCFE) and who satisfy certain entry criteria.

**Further details are available from FET Liaison Officer, IT Carlow, Kilkenny Road, Carlow.**

**Tel: 0599175080 | Email: [fet@itcarlow.ie](mailto:fet@itcarlow.ie)**

**Web: [www.itcarlow.ie/fepathways](http://www.itcarlow.ie/fepathways)**

## University of Sunderland

"The life changing University of Sunderland has fostered a collaborative progression opportunity with Waterford College of Further Education which allows its student to achieve a Level 8 Honours Degree. Studying at the University of Sunderland will not only allow you the opportunity to use our multi-million pound facilities, experience education in another country and access thousands of pounds worth of scholarships but it will also allow you to achieve your Level 8 degree in a quicker time frame compared to studying at a University in Ireland."

Ivan Lehane - *The University of Sunderland Representative.*

**For further details, please view Advanced Certificate in Early Learning and Care (6M21471) and QQI Level 6 - Advanced Certificate in Media Production (6M5130) in this prospectus.**

## Erasmus + Work placement in Europe

Selected students will have the opportunity to embark on a two-week work experience project in a European city.



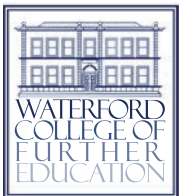
### Benefits to Students

- Experience another culture and learn the basics of another language.
- Observe and learn from transnational work practices.
- Enhance professional training which will enhance vocation specific knowledge.
- Development of professional knowledge, enhanced employability including development of soft-skills e.g. confidence, self-reliance, workplace knowledge and professional training.
- The programme includes the cost of accommodation, meals and travel of participants.





# WCFE



[www.facebook.com/WaterfordCFE](https://www.facebook.com/WaterfordCFE)

Parnell Street, Waterford, Ireland.

**T:** (051) 874 053

**F:** (051) 870 136

**E:** [wcfefinfo@wwetb.ie](mailto:wcfefinfo@wwetb.ie)

**W:** [www@wcfef.ie](http://www@wcfef.ie)

PRINTING - [www.officemaster.ie](http://www.officemaster.ie)